

FEATURES:

- Extremely low current leakage
- Over 100 dB insertion loss from 150 kHz to 10 GHz
- Suitable for mobile installations
- Fully accessible end chambers
- RoHS compliant and CE marked for compliance with the low voltage directive



N242x Series Power Filters

THE N242x Filters are low leakage RFI/EMI high performance power filters.

DESCRIPTION

The N242x filters have been designed for use where low earth leakage is a requirement. The performance is maintained up to full load in both symmetric and asymmetric modes. The leakage current is directly proportional to the potential difference between the neutral and earth leads at the filter input terminals.

Solid and permanent earthing of the case is essential for safety and to ensure optimum performance.

FEATURES

N242x filters have an extremely low current leakage. They are fully tested for attenuation performance, voltage withstanding to 1KV for thirty seconds, and insulation resistance.

The N242x series of filters provide 100 dB insertion loss from 150 kHz to 10 GHz in both symmetric and

asymmetric modes up to full load.

These filters are suitable for mobile installations and have fully accessible end chambers for termination of input and output cabling.

APPLICATIONS

- Military field installations
- Commercial installations using motor generator sets
- Filtering of mains supplies where maximum safety is required
- Under certain circumstances, the N242x filters may be used with earth leakage safety cut-outs (please consult the sales office for these types of applications)

STANDARD CONFIGURATION

- The filter networks are RF sealed in high quality electroplated steel cases
- Available with a variety of cable entry options

- Fixing kit is supplied as standard

OPTIONS

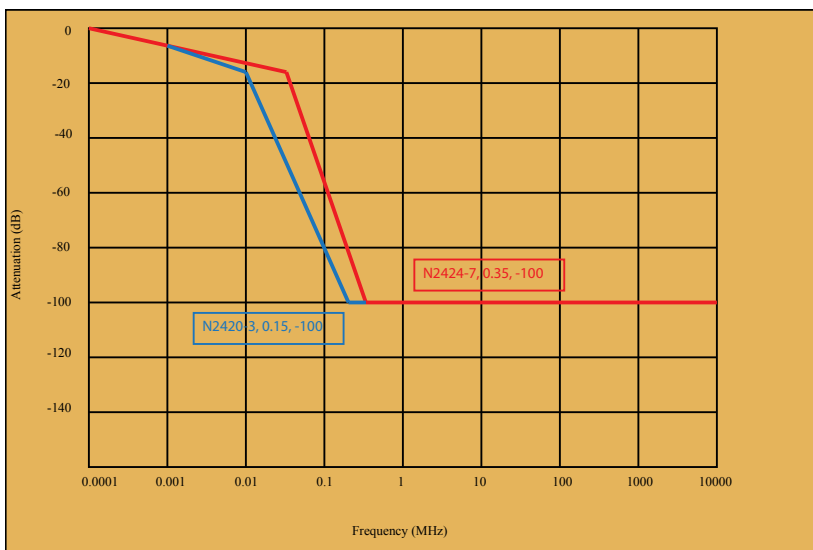
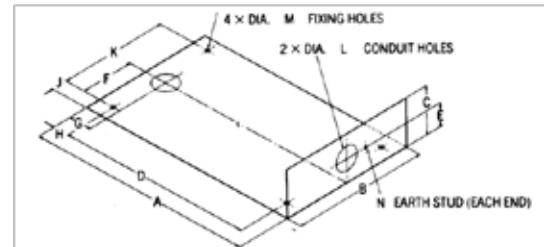
- TS (transient suppressor) to give total protection against all normal mains-borne interference
- HVTS (high voltage transient suppressor)
- Other options upon request

Electrical Specifications

| PART # | CURRENT MAX | LEAKAGE CURRENT PER VOLT (N-E) | VOLTAGE MAX | # OF LINES | VOLTAGE DROP ON FULL LOAD IN 250V 50/60Hz SYSTEM/LINE | DC RESISTANCE PER LINE | SERIES INDUCT. PER LINE | SHUNT CAPAC. PER LINE | CASE TEMP RISE ON FULL LOAD | MAX. RECOM. CASE TEMP ON FULL LOAD | FULL LOAD DISSIPATION |
|--------|-------------|--------------------------------|-------------|------------|---|------------------------|-------------------------|-----------------------|-----------------------------|------------------------------------|-----------------------|
| N2420 | 6 A | 2 mA | 250 V | 2 | 1 V | 0.1 Ω | 1,680 uF | 4.5 uH | +10 ° C | +70 ° C | 20 W |
| N2421 | 6 A | 2 mA | 440/250 V | 4 | 1 V | 0.1 Ω | 1,680 uF | 4.5 uH | +10 ° C | +70 ° C | 40 W |
| N2422 | 32 A | 8 mA | 250 V | 2 | 0.4 V | 0.015 Ω | 177 uF | 24.5 uH | +12 ° C | +70 ° C | 100 W |
| N2423 | 32 A | 8 mA | 440/250 V | 4 | 0.4 V | 0.015 Ω | 177 uF | 24.5 uH | +12 ° C | +70 ° C | 200 W |
| N2424 | 63 A | 8 mA | 250 V | 2 | 0.3 V | 0.03 Ω | 25.5 uF | 24.5 uH | +12 ° C | +70 ° C | 60 W |
| N2425 | 63 A | 8 mA | 440/250 V | 4 | 0.3 V | 0.03 Ω | 25.5 uF | 24.5 uH | +12 ° C | +70 ° C | 120 W |
| N2426 | 100 A | 10 mA | 250 V | 2 | 0.5 V | 0.02 Ω | 37 uF | 28.5 uH | +25 ° C | +70 ° C | 120 W |
| N2427 | 100 A | 10 mA | 440/250 V | 4 | 0.5 V | 0.02 Ω | 37 uF | 28.5 uH | +25 ° C | +70 ° C | 240 W |

Physical Specifications

| PART # | A (mm) | B (mm) | C (mm) | D (mm) | E (mm) | F (mm) | G (mm) | H (mm) | J (mm) | K (mm) | L (mm) | M (mm) | N (mm) | WEIGHT (kg) |
|--------|--------|--------|--------|--------|--------|--------|--------|--------|--------|--------|--------|--------|--------|-------------|
| N2420 | 305 | 175 | 110 | 212 | 50 | 63.5 | 46.5 | 46.5 | 24 | 127 | 20 | 7 | M6 | 5.9 |
| N2421 | 305 | 345 | 110 | 212 | 50 | 108 | 46.6 | 46.5 | 64.5 | 216 | 20 | 9 | M6 | 11.8 |
| N2422 | 560 | 210 | 110 | 487 | 50 | 41.2 | 46 | 35 | 63.8 | 82.4 | 32 | 9 | M6 | 12.7 |
| N2423 | 560 | 415 | 110 | 487 | 50 | 143 | 46 | 35 | 64.5 | 286 | 32 | 13 | M6 | 24.9 |
| N2424 | 560 | 210 | 110 | 487 | 50 | 41.2 | 46 | 35 | 63.8 | 82.4 | 32 | 9 | M6 | 12.7 |
| N2425 | 560 | 415 | 110 | 487 | 50 | 143 | 46 | 35 | 64.5 | 286 | 32 | 13 | M6 | 24.9 |
| N2426 | 560 | 210 | 110 | 487 | 50 | 41.2 | 46 | 35 | 63.8 | 82.4 | 32 | 9 | M6 | 17.7 |
| N2427 | 560 | 415 | 110 | 487 | 50 | 143 | 46 | 35 | 64.5 | 286 | 50.8 | 13 | M6 | 34 |



Phone +1.512.531.6400 • info@ets-lindgren.com • www.ets-lindgren.com
Offices in the US, Finland, UK, France, Germany, Singapore, India, Japan, China, Taiwan