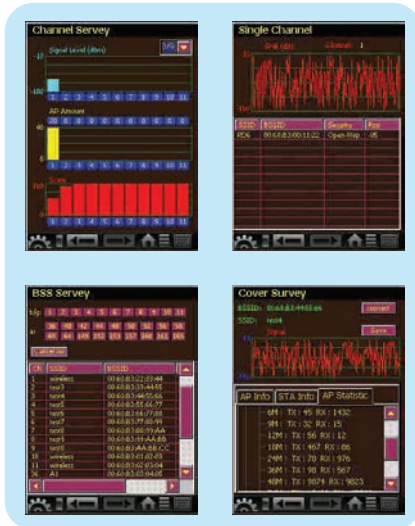


# WFT-20

## Wi-Fi Tester

WFT-20 is a PDA based Wi-Fi tester for scanning, analyzing and optimizing 2.4/5 GHz WLAN, which operates on IEEE802.11A/B/G/N standards and allows user to acquire AP MAC address, SSID, data encryption and RSSI signal levels.



### Function

- ◆ 2.4/5GHz wireless network analysis
- ◆ Channel survey
- ◆ BSS survey
- ◆ Roaming test
- ◆ Connection test:  
Pack send/receive, signal strength
- ◆ Rogue AP/Rogue client detecting
- ◆ AP detector/power check
- ◆ Test report

### Hardware

- ◆ CPU: PXA270 (520MHz 32 bits RISC)
- ◆ 128MB SDRAM & 128MB Flash ROM
- ◆ 3.5" 240 x 320 Color TFT touchscreen
- ◆ Numeric keyboard with LED backlight
- ◆ Wolfson WM9705 AC' 97 codec
- ◆ OS: WinCE .NET 5.0 Pro
- ◆ IP54 certificate, IP64 compliance:  
Water-dust proof, 1.5m drop test

## Specifications

Model	WFT-20
Radio	A/B/G/N, 5 dBi Dual Band Detachable Antenna × 2
Connector	RP-SMA Jack
Sensitivity	Up to -100 dBm
Connectivity	USB / USB host cable
Signal Strength Test	All Channels
Usage of Channel (Quantity of Base Station in Each Channel)	Yes
Score of Channels	Yes
Base Station Scan	Synchronous A/B/G/N
Base Station Info	SSID/BSSID/RSSI, Sorting, Channel Selection
Base Station Tracing	Yes
Specified Base Station Info	Yes
Roaming Test Report	Yes
Security Detection	Yes
Clients' Status of Specified Base Station	Yes
Base Station Status	Data Rate: 54/48/./6/11/./1 Mbps Frame (Ctl/Mgt/Data/Error/Retry)
Connection Test	Ratio of Transition / Revelation of Signal Strength
Auxiliary Tools	Free Space Loss/ Power Meter/Distance Calculation/ dBm-mW Conversion /AP Detector
Power Supply	7.4V Li-Ion (3000mAH) Battery Pack; One Rechargeable Backup Battery
Battery Life	4 Hours (Continuous operation)
Weight	560g (1.2 lbs)
Dimensions (H × W × T)	192.5 × (91.3/78) × (42.2/60.6)mm 7.6 × (3.6/3) × (1.7/2.4)inch

\* Specifications subject to change without notice

