



Fuguang Electronics

FBO-CT Series Battery Group Online Discharge-Charge Load

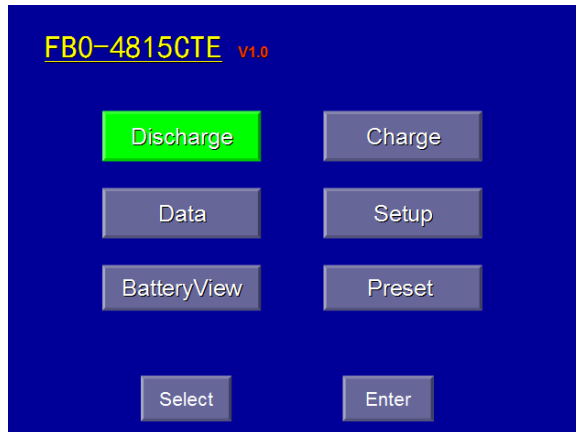
Revolutionary, new generation product



◆ FEATURES:

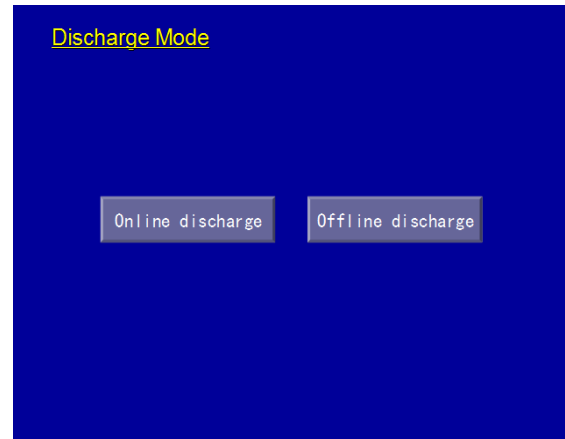
1. Multifunctional: online discharge, offline discharge, online charge, online monitor, meeting kinds of test requirement;
2. Online discharge: keep online with power system while the tested battery group carries on constant current discharging by FBO internal intelligent load.
3. Online charging: after discharging, auto-start online charging function to charge battery group by commutator, avoid the big differential pressure caused by connect battery group back to system.
4. Intelligent dealing on commercial power abnormal: when commercial power abnormal, FBO will follow the pre-set, stop the tested group discharging on the internal intelligent load, which greatly protect power supply for power system
5. Adopt wireless unit monitoring technology, support 2V/6V/12V unit voltage monitor; each wireless monitor module can test four units together at the same time, much easier for wireless connection operation.
6. Adopt bus organized structure for unit voltage collection and record, and no matter how many groups there are, they can be monitored together at the same time
7. 5.7 inch big colored display, all the parameters can be checked during the discharge, brevity interface, humanistic display
8. Allow to merge a lot of smart constant expansion module, meet the higher discharge current.
9. Charge current auto-calculate: the discharge parameter can be auto-calculated the group required discharge current by battery standard capacity and user's required test time, and all the capacity by battery discharged will be auto-calculated into C10.
10. Discharge parameter preset, allow to ex-setup no more than nine kinds of discharge parameter internal, which reduce to re-setup the discharge parameter in many situations those are more convenient to operate. Also allow to modify any ex-setup parameter any time.
11. Huge internally stored program, allow to save multi-group discharge data.
12. Allow to connect PC during discharging, real-time receive the discharge data, also allow to copy the discharge data for analyses by USB to PC, then generate report.
13. Allow to setup four kinds of closing-down thresholds: battery group voltage, unit current, discharge time, and discharge capacity; if closing down, the LCD will display the cause with alarm sound.
14. Smart power supply: adopt AC & DC two ways for supply

◆ SMART FUNCTIONS:



1. Easy menu design

Touching LCD screen, easy to setup



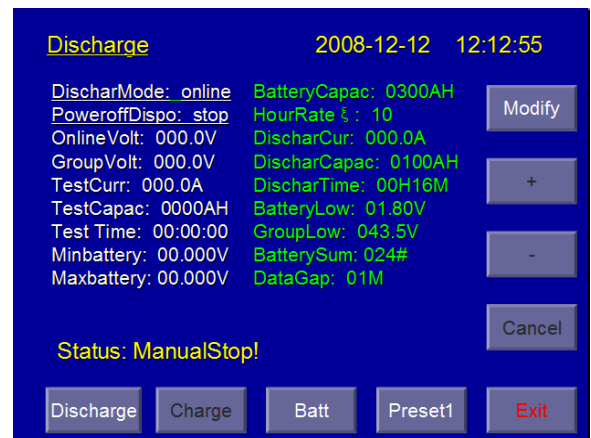
2. Discharge Mode

Support online/offline discharge, meet kinds of test requirement



3. Pre-set 8 groups discharge parameter

8 kinds of frequent parameter setup, no need to reset, convenient and high-efficiency



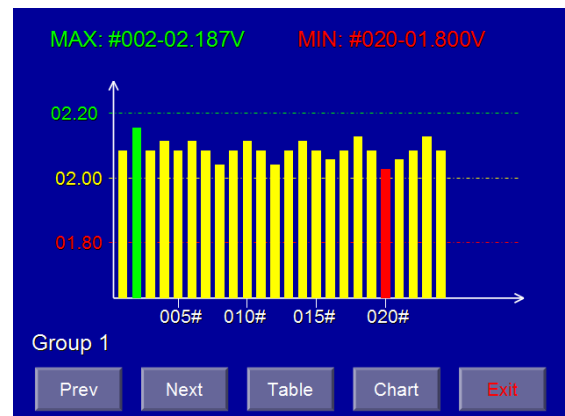
4. Smart dealing with power cut

According to the user requirement, discharge by actual load or previous constant current after power cut



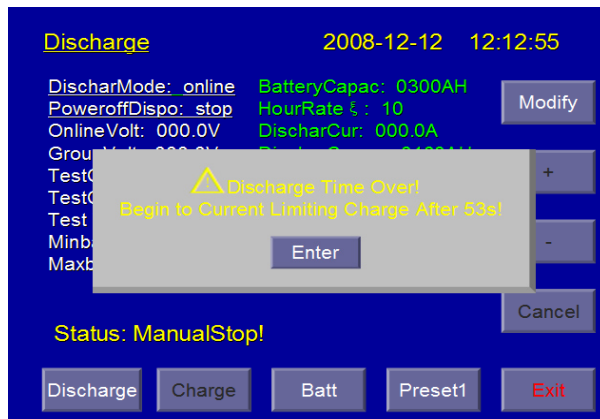
5. Real-time detect the unit voltage during testing

Easily check the MAX or MIN voltage unit when discharging, helpful for your analysis



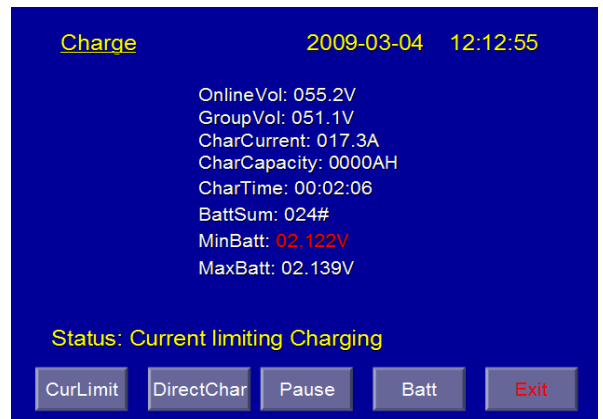
6. Real-time check the unit voltage by bar chart:

Easily check the MAX or MIN voltage unit when discharging, helpful for your analysis



7. Auto turn to charge after discharging

Avoid the big differential pressure caused by connect battery group back to system



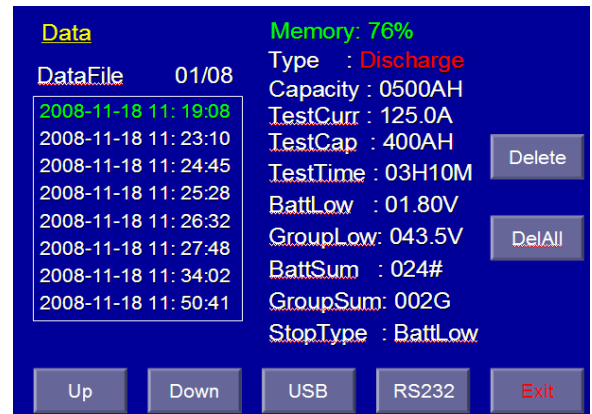
8. Charge state

Auto turn to charge state after discharging, current-limiting charge or direct charge, two for choosing



9. Real-time check the unit voltage during charging

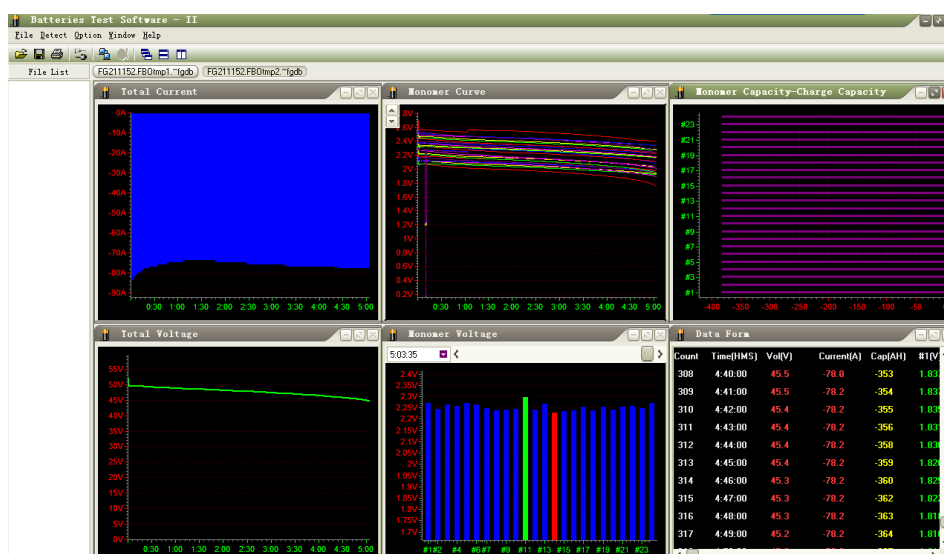
Easily check the MAX or MIN voltage unit when discharging, helpful for your analysis



10. discharge-charge data management

8M internal stored program, allow to save multi-group discharge data

◆ BACKGROUND ANALYSIS SOFTWARE:



- Powerful capacity forecast evaluate function, be able to evaluate the group capacity within shot time
- Display the data by column, report, curve, also can be enlarged and minified partly, for read conveniently.
- Can generate EXECL report automatically, convenient for sending or upload data.
- Data shows in tree structures shows, easy for data reading and backup

◆ SPECIFICATIONS:

Battery pack	48V	Mini-UPS	Power station		High-voltage UPS
		20~110V	110V	220V	
Type	FBO-4815CT	FBO-9605CT	FBO-2206CT		FBO-6003CT
Battery pack voltage	0~60V	18~110V	96~260V		300~650V
Discharge current	0~150A	0~50A	0~30A (110V)	0~60A	0~30A
Charge current	0~150A	0~50A	0~60A		0~30A
Battery voltage monitoring	Adopt wireless battery monitoring technology, FBO series support 2V/6V/12V battery voltage monitoring. Each wireless monitor module can test 4 batteries together at the same time. Comparing 1-to-1 module, the needed number of module allocate just a forth, much easier for wireless connection operation.				
Accuracy	Discharge current: $\leq \pm 0.1\%$; Group-terminal voltage $\leq \pm 0.1\%$; Battery voltage: $\leq \pm 0.05\%$				
PC communication	RS232 interface				
Data storage	32 sets of test data				
Dimension(mm)	508×223×372				628×223×372
Weight(kg)	13				18