

## PITE 3980 Battery Load Banks (General Info)

---Your best choice for battery load bank

**PITE 3980 series** DC load unit are specially designed for discharge experiment, battery capacity test, battery maintenance, engineering examination and other tests for DC power with load. With its optional Data Acquisition Case (DAC), you will have a real-time monitoring for the whole process of discharge with wireless communication in PC.

It is a smart, safe and environment-friendly load bank that you could count on.



### Why PITE load units?

It is significant to check battery capacity in a regular basis. And the only reliable way to measure the battery capacity is to carry out a discharge test which is a must-to-do job to energize standby batteries and extend their life span.

PITE 3980 series DC load banks feature unique design and excellent performance that will facilitate your work for battery maintenance. It covers different types of batteries (1.2V, 2V, 6V and 12V). With different models, it has wide range of discharging like 24V, 48V, 110V, 220V and 380V. With optional DAC, discharging values of each cell could be viewed on the LCD display and computer simultaneously by using the PITE DataView software.

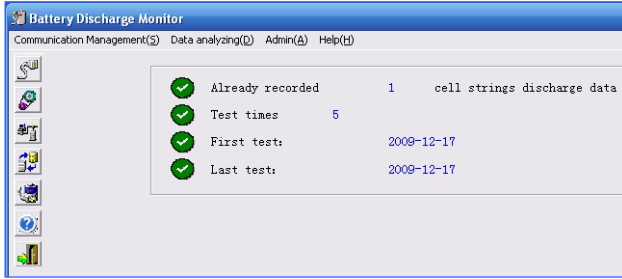
### Features

- ◆ Small weight, portable unit with carrying case, convenient for onsite test
- ◆ Optional wireless DAC enables its PC monitoring both for discharging and charging
- ◆ It sets 4 conditions for auto shut-down of discharge, secured and time-saving
- ◆ Continued discharge available when previous discharge is stop abnormally
- ◆ Parallel connection of two units for mass discharge
- ◆ Real-time display of voltage for each cell with DAC
- ◆ Accurate data results and vivid waveforms
- ◆ Auto sorting for lag-out batteries during discharging
- ◆ Optional AC & DC power supply modes for different needs
- ◆ Integrated functions for displaying, controlling and discharging
- ◆ Safe circuits avoids damage to battery when testing
- ◆ Direct USB drive for convenient data transfer to PC
- ◆ Powerful management software for data analyzing and report printing
- ◆ Warning info, dynamic discharge and static discharge data auto-saving
- ◆ Various models to meet almost all your application in either telecom or power utility

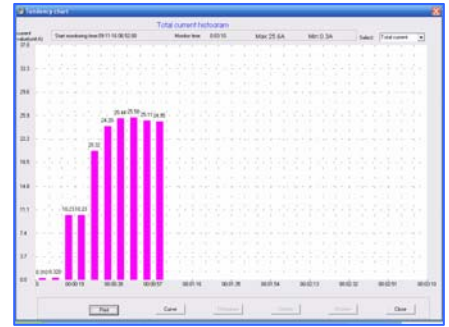


**PITE DataView**

All standard load units of PITE 3980 come with analyzing software. Real-time data monitoring, testing data analyzing and report printing are all available with the PITE DataView software.



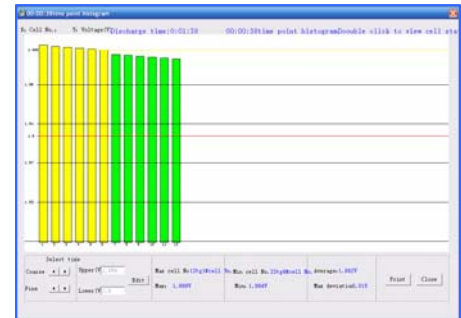
Simple interface with short-cut keys



Histogram of difference cells



Discharging curves of each cells



Editable voltage limit for comparison of testing result of difference cells

NOTE: Real-time monitoring and voltage value of each cell will become available only when the load bank model comes with DAC. Otherwise, the DataView Software will only play the role to analyze testing data.

**Technical Parameters**

<b>Mains Voltage</b>	1). AC 220V/110V, 50/60Hz; 2). DC (from battery discharged)
<b>Discharging Current</b>	Accuracy: 1%      Resolution: 0.1A or 0.5%
<b>Discharge voltage range</b>	48V: 10-55.2V      110V*: 10V-126.5V 220V: 10-253V      380V: 10-437V
<b>Voltage Accuracy</b>	0.5%
<b>Sampling Interval</b>	5s --1min
<b>LCD Display</b>	128*64 pixel
<b>Temperature</b>	0°C~40°C
<b>Humidity</b>	5%~90% Relative humidity
<b>Safety standard</b>	CE market, EMC standard
<b>Dimension &amp; Weight (main unit)*</b>	400*177*280 mm (Size: S, 11kg) 520*202*355 mm (Size: M, 16kg) 555*225*435 mm (Size: L, 21kg) 603*400*740 mm (Size: XL, 43kg)

\* 1). Dimension and weight depend on different models. Please refer to brochure of each model for details.

\*2). In some countries, 110V is replaced by 125V. Discharge voltage range: 10-143V.



**Optional Data Acquisition Case (DAC)**



DAC is optional for wireless communication with PITE 3980 main unit and PC. The new insulation-protected DAC is rugged and capable to measure all type of batteries (1.2V, 2V, 6V and 12V). One DAC could be connected with 12 cells of 1.2V, 2V or 4 cells of 12V (or 6V). With DAC, PITE 3980 and PITE DataView software will be able to monitor and record voltage of each cell. Without DAC, overall voltage will be recorded instead of voltage for each cell.

With 4 magnetic bolts at bottom for instant attachment to metal bars or cases →



**Order Information**

Model	Discharge Range	Code	NOTE *
<b>24V/48V 200A</b>	Current: 0-200A Voltage: 10V-55.2V	LB-2482	With DAC
		LB-2482-1	W/O DAC
<b>48V/110V 100A</b>	Current: 0-100A Voltage:10V-55.2V(nom:48V) 10V-126.5V (nom:110V)	LB-4811	With DAC
		LB-4811-1	W/O DAC
<b>48V/220V 100A</b>	Current: 0-100A Voltage: 10V-55.2V(nom:48V) 10V-253V (nom:220V)	LB-4821	With DAC
		LB-4821-1	W/O DAC
<b>110V/220V 100A</b>	Current: 0-100A Voltage: 10V-126.5V (nom:110V) 10V-253V (nom:220V)	LB-1121	With DAC
		LB-1121-1	W/O DAC
<b>380V 50A</b>	Current: 0-50A Voltage: 10V-437V	LB-3850	With DAC
		LB-3850-1	W/O DAC
<b>48V 300A</b>	Current: 0-300A Voltage: 10V-55.2V	LB-4830	With DAC
		LB-4830-1	W/O DAC
<b>110V 100A</b>	Current: 0-100A Voltage: 10V-126.5V	LB-1110	With DAC
		LB-1110-1	W/O DAC
<b>110V 200A</b>	Current: 0-200A Voltage: 10V-126.5V	LB-1120	With DAC
		LB-1120-1	W/O DAC

**NOTE:**

- ◆ All above models come with necessary parts and software.
- ◆ Amount of DAC depends on different models.
- ◆ Far more customized models will be available upon request.
- ◆ All above standard units are designed to test 2V, 6V and 12V batteries. Measurement for 1.2V cells is optional.
- ◆ This is just general information of PITE 3980 series battery load bank, for detailed models, please refer to their catalog respectively.

**Contact PITE**

**PITE TECH. INC.**

4/F, Bldg A, Chiwan Industrial Park, Shaodi Road, Shekou Area, Shenzhen, China

TEL: +86-755-2680 5759

FAX: +86-755-2688 0310

www.pitetech.com

sales@pitetech.com