

# Protek A434L

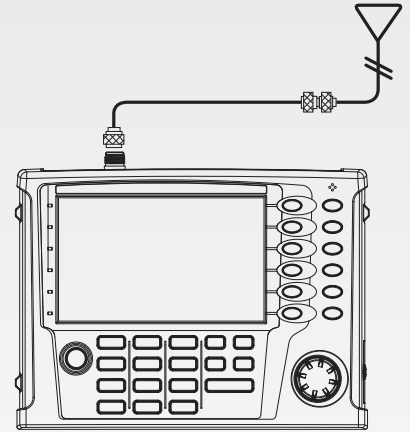
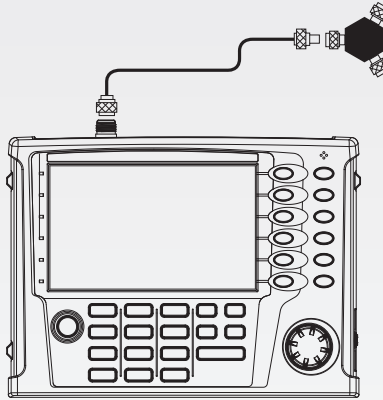
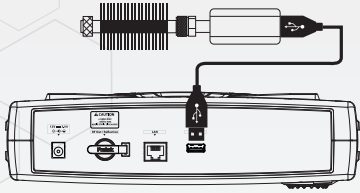
## 4GHz Cable & Antenna Analyzer

Protek is ready to provide you with good solution and good service that you need anytime and anywhere.

- ▶ The Economical Solution
- ▶ Ideal for Field Testing
- ▶ Lightweight and Easy-to-use

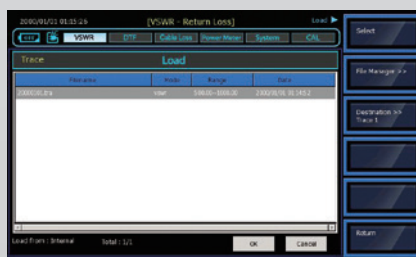
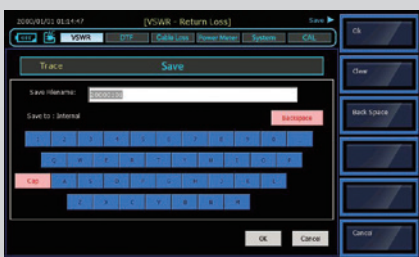
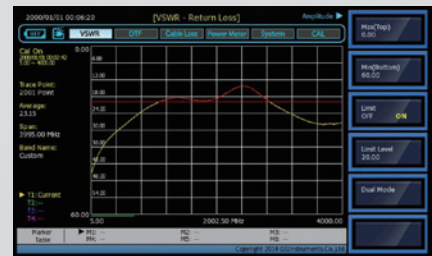
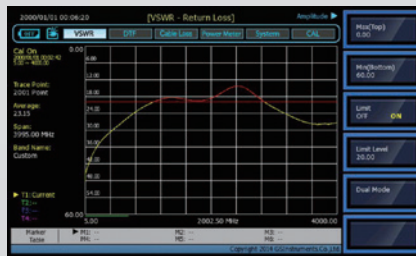
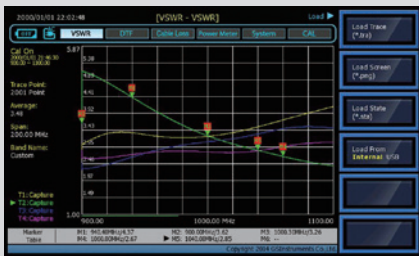
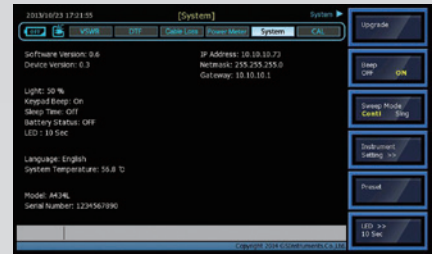


# Protek A434L 4GHz Cable & Antenna Analyzer

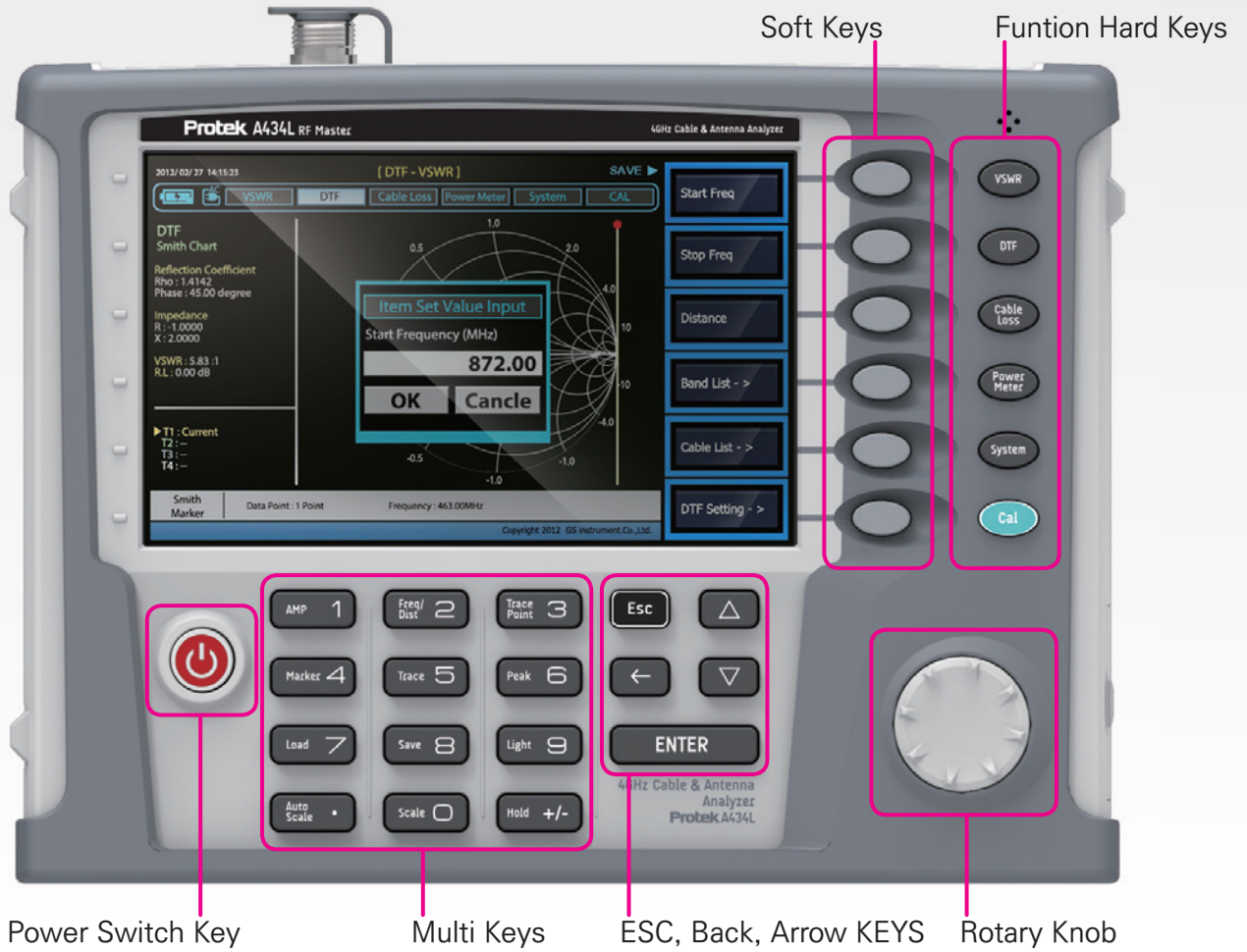


## General Information

- ① VSWR ② Distance to Falut ③ Cable Loss ④ Power Meter



# Protek A434L 4GHz Cable & Antenna Analyzer



▶ Top



▶ Rear



▶ Side



# Protek A434L 4GHz Cable & Antenna Analyzer



## Key Features

A large number of cell site problems are caused by the antenna system, cable, or connectors. It is important to have the right instrument available when either servicing or certifying cell sites for operation.

The Protek A434L RF master is a lightweight portable diagnostic tool for an accurate detection of operational problems. The Protek A434L has all the measurement functions necessary to accurately verify the antenna system from VSWR to power measurements. In addition, the Protek A434L makes distance-to-fault measurements to accurately pinpoint the fault's location.

The Protek A434L user interface is with a front keypad and a TFT color, 7-inch display providing ease of use and control. The application specific software allows the user to easily compare and analyze measurements and generate comprehensive reports. The Protek A434L is equipped with a rechargeable and in-field installable lithium-ion battery providing over four hours of operation.



## Key Features

- Rechargeable and in-field replaceable lithium-ion battery
- Built-in world-wide signal standards and frequency channels
- 7 Inch TFT color display viewable in daylight
- Dual display to view multiple measurements simultaneously to reduce test time
- Easy front keypad operation
- Superior immunity to RF interference
- Up to 2001 data points to locate long range problems
- Built-in cable menus containing >90 cables' characteristics
- User friendly menu structure
- Saves up to Memory (user setups, traces, screens)
- Alphanumeric labeling of saved data
- Automatic Time/Date stamp of saved data
- USB Port (USB 2.0)
- Remote firmware upgrade capability
- Fast one-touch selection of menu item or positioning marker
- Smart Battery management can be check Battery capability
- Rechargeable and field replaceable Lithium Ion battery with more than 4 hours operation time
- Backlight keypad for easier use in dark environments

## Key Measurements

- ▶ High resolution VSWR Measurements
- ▶ Distance to Fault (DTF) Measurements
- ▶ Cable Loss Measurements
- ▶ RMS Power Measurements (optional)

# Protek A434L 4GHz Cable & Antenna Analyzer

## Specifications

Item	Sub Item	Specification	
General	Max Input Power	+25dBm Damage level	
	Frequency Range	5MHz to 4GHz	
	Frequency Accuracy	< ±3ppm	
	Frequency Resolution	10kHz	
	Impedance	50Ω	
	Scan Speed	< 1msec /data point	
	Display	Single & Dual mode	
	Test port	N Female	
	Test curve storage	Internal : Minimum 512MB External : Limited by size of USB (32G)	
	Screen storage		
	Setup storage		
VSWR	Number of data points	126, 251, 501, 1001, 2001	
	Return loss Range	0 to -60dB	
	VSWR Range	1 to 65	
Cable Loss	Cable loss range	0 to -30dB, 0.01dB Resolution	
Interference Immunity	On-Frequency	+10dBm	
	On-Channel	+20dBm	
DTF	Return Loss Display Range	0 to 60dB	
	Distance Range	0 to 1250m (4125ft)	
	VSWR Display Range	0 to 65	
Miscellaneous	Dimension	260X193X67mm	
	Weight	<2.45Kg include battery	
	A434L Voltage and Current		12Vd.c., 3.5A
	Adaptor	AC Input	100 to 250Vd.c., 1.5A
		DC Output	12Vd.c., 5A
Battery		Li-Ion (4hr operating time after full charging), 12Vd.c., 7600mAh	
Environmental	Operating Temperature	0°C ~ +50°C	
	Storage Temperature	-40°C ~ +80°C (-40°F ~ +176°F)	
	Humidity	95%R.H. NO Condensation	
	Degree of protection	IPX0	
Power Meter(Optional)	Frequency Range	20MHz to 3.8GHz	
	Sensor Type	Average	
	Peak Power Sensor	-40dBm to +10dBm	
	Accuracy	±7%	
	Test Port	Precision N Female	

**Protek**  
It measures even what you think!

This is global  
**GSI**

**HEAD OFFICE**

**GS Instruments Co.,Ltd.**

70, Gilpa-ro 71beon-gil, Nam-gu, Incheon 402-854, Korea  
Tel : +82-1688-6820  
Fax : +82-32-870-5640  
isale@gsinstrument.com  
www.gsinstrument.com

**USA OFFICE**

**GS Teletech Inc.**

320 NW Victoria Dr, Lee's Summit MO64086, USA  
Tel : +1-913-469-6699  
Fax : +1-913-661-0163  
protek@gsteletechinc.com  
www.gsteletechinc.com

[www.gsi-protek.com](http://www.gsi-protek.com)