

E7000A/E7100A Cable & Antenna Analyzer

- **Cable and Antenna Analyzer**
E7000A 25 MHz to 4400 MHz
E7100A 25 MHz to 6000 MHz
- **Spectrum Analyzer Option**
E7000-SA 100 kHz to 3000 MHz
- High Performance
- Fast Measurement Speed
- Easy to Use
- Cost Effective
- Long Life Lithium Ion Battery inside

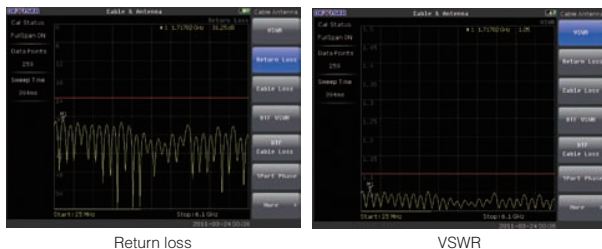
Overview

E7000A series cable and antenna analyzer is a perfect instrument for wireless and broadcasting base station. It covers 25 MHz to 6000 MHz frequency span and fits for the wireless communication and broadcasting market.

E7000A series provides 3 GHz spectrum analyzer option. The spectrum analyzer option can be configured as spectrum analyzer, interference analysis, power meter, and field strength meter. With the multi-functional capabilities, it eliminates the need to carry and learn multiple instruments.

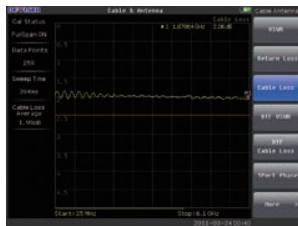
- **Return Loss/VSWR**

With >42 dB return loss dynamic range, E7000A series verifies the cable and antenna system which conform to performance specifications.



- **Cable Loss**

Cable loss function measures insertion loss within the cable feedline system. The E7000A series automatically calculates the average cable loss.

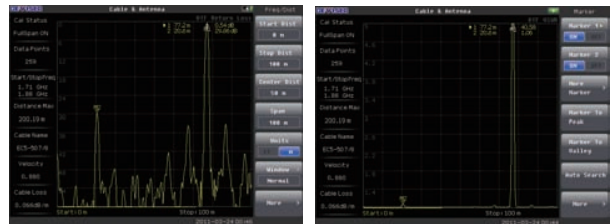


- **Distance-To-Fault**

DTF (distance-to-fault) function troubleshoots systems and locate the problem.



E7000A series displays cable characteristic(VSWR and RETURN LOSS) versus distance. Using the tools, users can monitor small relative changes over time.

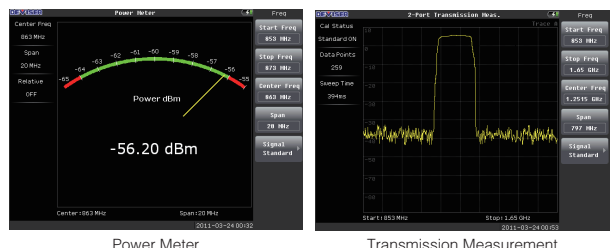


- **2-ports Transmission Measurements(With E7000-SA Option)**

2-ports transmission measurement enables you to measure gain, isolation and insertion loss as well as sector-to-sector isolation verification.

- **USB Power Meter Sensor Option**

The power meter sensor option provides RMS measurement for both CW and digital modulated signal. It supports 50M~6GHz frequency range.



- **Spectrum Analyzer Option (E7000-SA)**

E7000-SA covers 100k Hz to 3 GHz frequency range.

With this option, E7000A series can provide spectrum analysis, power meter, ACPR, OBW and interference signal analysis functions.

E7000A/E7100A Cable & Antenna Analyzer

For detail, please refer to the specifications of E8000A spectrum analyzer.

- **GPS Receiver Option**

GPS receiver option provides location (longitude, latitude, altitude) and Universal Time (UT) information. For the E7000A series, all measurement results can be saved with location and time information.

Key Features

- **All in one tool**

E7000A series is integrated with cable&antenna analyzer and spectrum analyzer. Users can perform measurement for wireless and broadcasting base station installation, maintenance with only one instrument – E7000 series.

- **Friendly GUI**

Better user interface and easy to use.

- **Fast measurement speed**

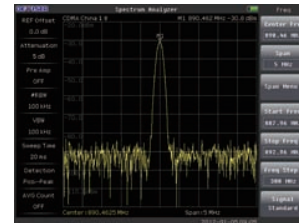
With 1.5ms/point sweep time, it is better for field measurement.

- **Large internal memory**

With more than 1GB internal memory space, E7000A series can save more 2000 trace files.

- **Flexible calibration mode**

E7000A series has 2 calibration modes. Standard OSL(OPEN-SHORT-LOAD) calibration is more accurate. Full span calibration is based on the stand OSL mode. With this mode, users don't need to re-calibrate the E7000 series when change the frequency range.

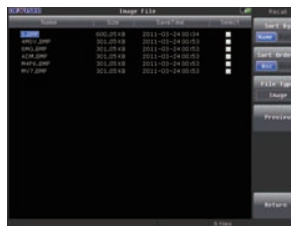


Spectrum analyzer

- **Easy data link**

E7000A series has one 10M/100M LAN port. It supports standard SCPI program interface which is open to user for developing user defined program.

E7000A series has 2 USB ports. It is easy to import and export files between the instrument and USB disk.



Files



Calibration

Specifications

	E7000A	E7100A
Measurement	VSWR Return Loss Cable Loss Distance-to-Fault (DTF) Return Loss Distance-to-Fault (DTF) VSWR 1-Port Phase Smith Chart	
Frequency Range	25 MHz ~ 4400 MHz	25 MHz ~ 6000 MHz
Frequency Resolution	1 kHz	
Frequency Accuracy	±5 ppm	
Output Power Level	0 dBm typical	
Sweep Time	1.5 ms/point	
Data Points	130,259,517,1033	
RF Immunity		
	0 dBm within ±10 kHz of the carrier frequency +17 dBm @ >1.0 MHz from carrier frequency	
Corrected Directivity	>42 dB after OSL calibration >38 dB after full span calibration	
Return Loss		
Range	0.00-60.00 dB	
Resolution	0.01 dB	
VSWR		
Range	1-65	
Resolution	0.01	
Cable Loss		
Range	0.00-30.00 dB	

	E7000A	E7100A
Resolution	0.01 dB	
DTF		
Return Loss Range	0.00-60 dB	
VSWR Range	1-65	
Length	0 to (Data points-1)/(Span×2) × Vp × C Span=frequency range	
Resolution (m)	=Vp × C / (Span×2)	
RF Output Port	NF Type	
Impedance	50 Ω	
Display	6.5" TFT LCD, 640*480	
Speaker	Internal	
Interface	1 USB2.0, 1 mini USB 1 10 M / 100 M LAN port	
Storage Space	1GB memory, >2000 trace files	
Operating Temperature	-10 ~ +55°C	
Storage Temperature	-20 ~ +80°C	
Weight	< 2.2 kg	
Dimension(L×W×H)(mm)	258 × 173 ×74	
Power Supply		
Battery	11.1 V, 5.2AH	
Continuous Work Time	>4.5 Hours	
AC Adapter Output	15 ~ 19 V DC	
AC Adapter Input	100-240 V AC, 50-60 Hz	
Language	English, Chinese	