

• Communication

PC BASED ANALOG COMMUNICATION TRAINER

New
ED-1460

- Interlocking system package with CBIS-1400 and DS-1410 Models (Options)
- Experiments on a measurable low frequency bandwidth
- Realistic experiments on modulation and demodulation
- Verification of the output waveform on PC engaged with CBIS-1400 Model
- Easy operation for checking each signal waveform (standard waveforms provided)
- AM(Amplitude Modulation), FM(Frequency Modulation), PLL(Phase Locked Loop), FDM(Frequency Division Multiplex), TDM(Time Division Multiplex)



> CONFIGURATION

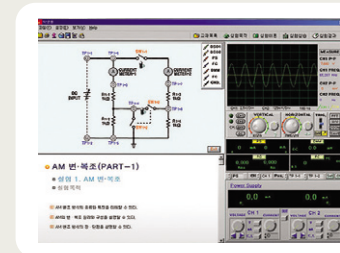
• ED-1460 : PC Based Analog Communication Trainer

- » Number of Modules : 5ea
- » Size of modules :
290(W) x 210(H) x 26(D)mm
- » Module Storage Box(1ea) :
596(W) x 318(H) x 255(D)mm

• Required System

- » DS-1410 : Docking Station(Optional)
› Please refer to page 24 on DS-1410 Specifications
- » CBIS-1400 : Computer Based Instrument System(Optional)
› Please refer to page 22 on CBIS-1400 Specifications
- » Computer(Optional)

Operating Software

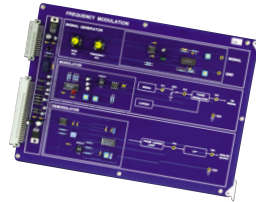


Experiments Module



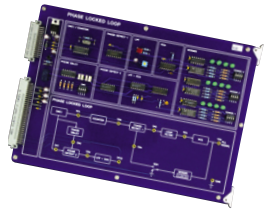
M-61 AM

- To understand types and characteristics of AM modulation
- To illustrate AM modulation/demodulation
- To explain strength and weakness of AM modulation method



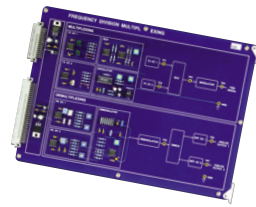
M-62 FM

- To understand types and characteristics of FM modulation
- To illustrate the principles and structure of FM modulation and demodulation
- To explain the strength and weakness of FM modulation method
- To familiarize the strength and weakness of FM modulation and AM modulation



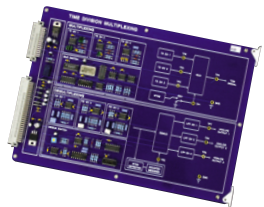
M-63 PLL

- To understand principles and characteristics of PLL
- To illustrate the use of PLL



M-64 FDM

- To understand the definition of Multiplex and Demultiplex
- To illustrate the principles and applications of Frequency Division Multiplex / Demultiplex
- To familiarize strength and weakness of Frequency Division Multiplex



M-65 TDM

- To understand the definition of Multiplex and Demultiplex
- To illustrate the principles and applications of Time Division Multiplex/Demultiplex
- To familiarize strength and weakness of Time Division Multiplex

OS ENVIRONMENT

- Pentium IV above 1.7GHz, RAM 512M or higher
- Hard Disk Min. 500Mbyte free space
- USB 2.0 Compatible
- Windows NT4.0/2000/XP(Recommended OS : Windows XP)

ACCESSORIES

- Connection Cord : 1set
- AC Power Cord : 1ea
- Program CD : 1set
- User's Manual : 1ea