

MJÖLNER 600

Micro-ohmmeter



- **Fully automatic testing – Micro processor controlled**
- **Safe test – DualGround™ and Remote control**
- **Remote control from mobile app**
- **True DC – ripple free current**
- **Lightweight suitcase – withstands the impact of water, dust or sand**
- **Built in thermal printer**
- **PC interface connection**

DESCRIPTION

The MJÖLNER™600 is designed to measure the resistance of circuit breaker contacts, bus-bar joints, contact elements in bus-bars and other high-current links. The product has been designed with safety, ease of use and versatility in mind.

The micro-ohmmeter conducts true DC ripple free current and can be used anywhere to measure a low resistance value with high accuracy. With MJÖLNER 600 it is possible to make measurements according to the DualGround™ method. This means that the test object will be grounded on both sides throughout the test giving a safer, faster and easier workflow.

Choose the MJÖLNER 600 with excessive power resources for demanding applications, superior measurement accuracy and when 300 Amp continuous is required.

The lightweight and rugged suitcase design makes MJÖLNER 600 an excellent choice when you need a portable solution in the field. When the case is closed, the product can withstand the impact of water, dust or sand – it even floats.

Optional accessories are a remote control and the PC software MJÖLNER Win with export functions for tables to Microsoft® Excel®

APPLICATIONS

MJÖLNER 600 test system is designed to serve a number of applications. The most common are contact resistance measurements of low-, medium- and high-voltage breakers and also at bus-bar joints, and other high current links.

The contact resistance measurements concerning breaker testing are particularly called for in the following standards: IEEE C37.09-1999 and IEC 62271-1 (2011).

If the contact resistance is too high this will lead to power loss and temperature rise, which often leads to serious trouble. To avoid such problems, it is necessary to check the resistance at regular intervals.

The following table demonstrates how important low resistance is at high currents:

Current	Contact resistance	Power loss
10 kA	1 mΩ	100 kW
10 kA	0.1 mΩ	10 kW
1 kA	1 mΩ	1 kW
1 kA	0.1 mΩ	100 W

At 10 kA a contact with the resistance 0.1 mΩ gives a power loss of 10 kW. This power loss in one single point will definitely confer a temperature rise, which may result in overheating and possibly premature failure.

FEATURES AND BENEFITS

1. Grounding terminal
2. Connection for mains voltage
3. Switch for mains voltage
4. TEMP. SENSOR
This interface is for connection of a temperature probe for temperature compensating.
5. INTERFACE
For communication with PC and MJÖLNER Win.
6. DATALOGGER
Port to connect a USB stick for datalogging. Results can be viewed with Excel.
7. REMOTE
Remote control connector
The remote controls current value, start /stop of measurement and print out function.
8. Printer
9. Keys to control the menu functions
10. Start/Stop key with status LED
11. Adjustment keys to set the measuring current and all menu values
12. DC+ current output
13. Sensing terminals
14. DC- current output
15. Shunt output
16. Clamp sense input



Suitcase shape
The unit comes close to the body thus making the unit easier to carry. Rugged plastic housing, in most cases no need for an additional heavy transport case.



Current cables in separate bag
Perfect balance when carrying the equipment.



APPLICATION EXAMPLES

Circuit Breaker testing

- Test of circuit breaker contacts
- Test of the connections to the breaker

Testing of Bus-bar

- Test of Bus-bar joints
- Test of connections

Transformer testing

- Winding resistance – not on all type of transformers.
(In many transformers there is a need for higher voltage than 5 V)
- Internal/external connections

Everywhere you need to test a low resistance/ high current connection

- Switches
- Disconnecting devices
- Safety ground connections
- Welding points
- Fuses
- Cables

BOTH SIDES GROUNDED

Many utilities require safety grounds remain in place during station outages, therefore, the MJÖLNER 600 was designed with this field safety constraint in mind.

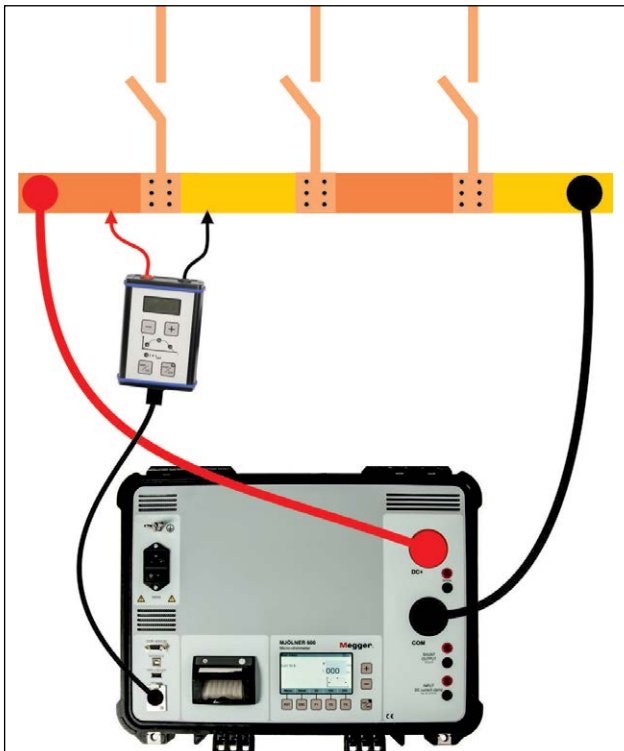
Minimum time shall be spent in the substation and focus shall be on the test rather than the equipment.

The DualGround™ testing method is available for all tests on all circuit breakers.

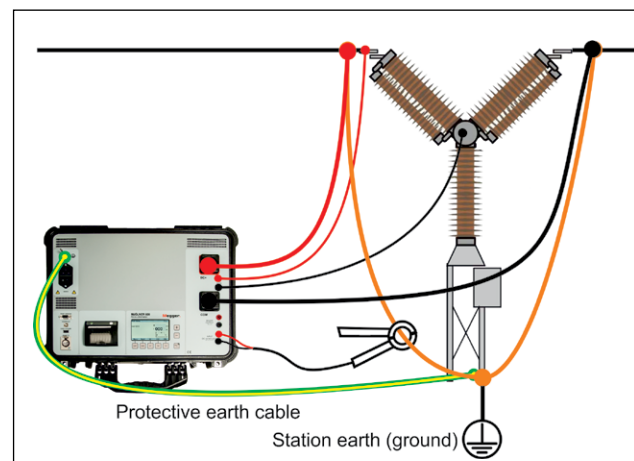
The following table indicates other test methods and Megger instruments that can use the DualGround testing:

Timing	TM1700/1800 with DCM module
Motion	TM1700/1800
Dynamic Resistance Measurement (DRM)	TM1700/1800 with SDRM202

Equipment and methods that supports DualGround™ testing are associated with the DualGround symbol. This symbol certifies the use of groundbreaking technology and methods that enables a safe, fast and easy workflow with both sides grounded throughout the test.



Using the remote control you can measure the voltage drop (voltage) across each contact element within every section of the bus-bar being tested.



You can make tests with both sides of the test object grounded, an additional safety feature.

SPECIFICATIONS

Specifications are valid at nominal input voltage. Specifications are subject to change without notice.

Environment

Application field The instrument is intended for use in high-voltage substations and industrial environments.

Temperature

Operating -20°C to +50°C (-4°F to +122°F)

Storage & transport -40°C to +70°C (-40°F to +158°F)

Humidity 5% – 95% RH, non-condensing

CE-marking

LVD 2014/35/EU

EMC 2014/65/EU

General

Mains voltage 100- 120 / 200-240 AC, 50/60 Hz

Input current (max) 39 A at 100 V, 18 A at 230 V (3 sec)

Protection Fuses (200 mA and 400 mA)
Thermal fuse, Software
Shut off temperature: 70°C (158°F)
internal temperature

Dimensions 486 x 392 x 192 mm (19" x15" x 7.5")

Weight 13.8 kg (30.4 lbs)

Display LCD

Available languages English, Deutsch, Français, Español, Svenska

Printer Thermal printer

Thermal paper roll Width 57.5 mm, diameter 32 mm

Current cables 2 x 3 m (9.8 ft), 35 mm²

Sensing cables 2 x 3 m (9.8 ft), 2.5 mm²

Measurement section

Range 0 – 999.9 mΩ

Resolution 0.01 μΩ below 100 μΩ
0.1 μΩ below 1.0 mΩ
1 μΩ below 10 mΩ
10 μΩ below 100 mΩ
100 μΩ below 1000 mΩ

Inaccuracy	Typ.	Max.
100 A, ta 25°C, R < 1 mΩ	±0.2 μΩ	±1 μΩ
50–600 A, ta 10–40°C, R < 1 mΩ	±0.3 μΩ	±2 μΩ
50–600 A, ta 0–50°C, R < 1 mΩ	±0.7 μΩ	±3 μΩ
50–600 A, ta -20–50°C, R < 1 mΩ	±1.1 μΩ	±4 μΩ
600 A, ta 10–40°C, 1 mΩ < R < 8.4 mΩ	±6 μΩ	±50 μΩ
50 A, ta 10–40°C, 10 mΩ < R < 100 mΩ	±80 μΩ	±500 μΩ
5 A, ta 10–40°C, 100 mΩ < R < 500 mΩ	±1 mΩ	±10 mΩ
5 A, ta 10–40°C, 500 mΩ < R < 1000 mΩ	±2 mΩ	±20 mΩ

Current shunt 600 A, 60 mV

Sense ranges 0-2 mV, 0-20 mV, 0-200 mV, 0-5 V

Outputs

DC+ / COM

Range 5 – 600 A DC (steps of 1 A)

Max. output voltage 5.25 V at 600 A

Max. ripple 80 mV_{pp}, 28.3 mV_{rms}
at 0 - 50°C (+32°F to +122°F)

Max. load capacity¹⁾

300 A Continuous

OUTPUT 100 μV/A

Shunt output From internal shunt 60 mV at 600 A

Inaccuracy ±1%

Inputs

SENSE Max. 20 V between terminals and to protective earth(ground)

INPUT Max. 20 V between terminals and to protective earth(ground)

DC current clamp Adjustable 0.1 – 20 mV/A

Input sensitivity >1 MΩ

Input impedance >1 MΩ

1) At 25°C (77°F) ambient temperature

OPTIONAL ACCESSORIES

Remote control



BD-90010

Many times, you place the test equipment on the ground while the cables are connected high up on a circuit breaker. In these situations, it can save a lot of time using a remote control during the test. The remote control has most of the functionality in the MJÖLNER 600 such as starting and stopping, setting the test current and read out the test values.

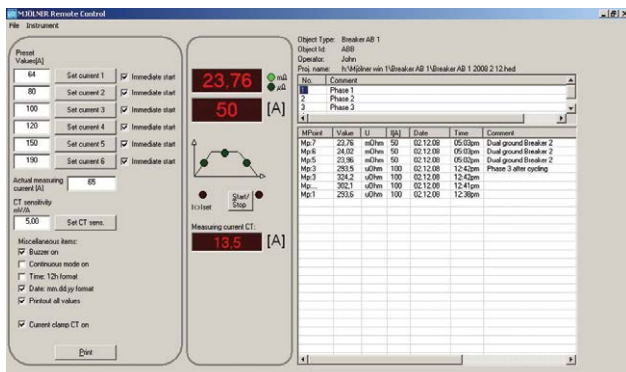
Temperature probe



BD-90012

The temperature probe is used for temperature compensation of conductors (copper and other metals).

MJÖLNER Win



The Windows program makes it easy to manage/save all test results in a simple way. All information, meta-data of the test object e.g. a circuit breaker and the test results are stored together and they can easily be transferred to Microsoft® Excel for further analysis.

Extension cables



Extension cable sets, 5 m and 10 m.

The 5 m set, GA-03209, includes two current cables 5 m, 35 mm² and two sensing leads, black and red, 10 m. The 10 m set, GA-03210, includes two current cables 10 m, 35 mm² and two sensing leads, black and red, 15 m.

DualGround kit

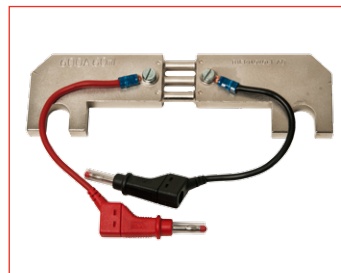


XA-12992

DualGround kit: Current probe 200 A, max. conductor size 50 mm diameter (2") and 2 test cables, 5 m (15 ft).

Note: Included in Ordering No. BB-59093

Calibration shunt and XLR Bluetooth dongle



Calibration shunt, 600 A/60 mV (BB-90020)



XLR Bluetooth dongle (BD-90011)

INCLUDED ACCESSORIES



Ground cable, 5 m (16 ft) 2.5 mm²



Cable set, current cables 2 x 5 m (16 ft), 35 mm²



Sensing cables 2 x 5 m (16 ft)

ORDERING INFORMATION

Item	Art. No.
MJÖLNER 600	
Incl. Cable set, current cables 2 x 5 m (16 ft), 35 mm ² and sensing cables 2 x 5 m	
Ground cable, 5 m (16 ft) 2.5 mm ²	BB-59091
Incl. Cable set, current cables 2 x 5 m (16 ft), 35 mm ² and sensing cables 2 x 5 m	
Ground cable, 5 m (16 ft) 2.5 mm ²	
DualGround kit, (XA-12992)	BB-59093
Optional accessories	
MJÖLNER Win	
Windows® software	
Including XLR Bluetooth dongle (BD-90011)	BD-8010X
Remote control	
With connection cable, 5 m (16 ft)	BD-90010
XLR Bluetooth dongle	
	BD-90011
Temperature probe	
	BD-90012
Thermal paper roll for printer	
	GC-00060
Extension cable set 5 m	
Current cables 2 x 5 m, 35 mm ² and sensing cables 2 x 10 m	GA-03209
Extension cable set 10 m	
Current cables 2 x 10 m, 35 mm ² and sensing cables 2 x 15 m	GA-03210
Calibration shunt	
600 A/60 mV shunt	BB-90020
DualGround kit	
DC Current clamp 200 A and test cables 2 x 5 m (16 ft)	XA-12992