

Indoor Environment Quality

1/1 and 1/3 Octave Analysis

Octave is an interval between two sounds having a ratio of two to one in terms of their frequency span. For example, 200 Hz is an octave higher than 100 Hz; 400 Hz is one octave higher than 200 Hz.

Octave bands are classified according to their geometric centre frequency based on the internationally standardized 1000 starting point. The 1000 Hz or 1 kHz band has limits of about 707 and 1414 Hz.

Frequency analysis mode (1/1 and/or 1/3 octave analysis) is usually used if there is a need to improve acoustic properties of a room or working place. The results of frequency analysis show in which part of the acoustic spectrum noise originates, and which frequency components should thus be attenuated.

1/1 Octave Analysis

Frequency bar graph with 9 bars representing nine octave bands from 31 Hz

to 8000 Hz and broadband bar graph for broadband measurements: 31-62-125-250-500-1000-2000-4000-8000.

1/3 Octave Analysis

Frequency bar graph with 27 bars representing 27 one-third octave bands from 25 Hz to 10000 Hz and broadband bar graph for broadband measurement: 25-31-40-50-62-80-100-125-160-200-250-315-400-500-630-800-1000-1250-1600-2000-2500-3150-4000-5000-6300-8000-10000

Class 1 / Class 2

Sound measuring instruments, processors and probes are classified as being Class 1 or Class 2 according to the measurement accuracy achieved. A class 1 instrument may only be formed by combining a class 1 probe with a class 1 processor. Class 1 processor shall, at least, cover the range from 45 Hz to 7.1 kHz in one third octave bands. Class 2 processor shall, at least, cover the same range, or 45 Hz to 5,6 kHz in octave bands, as specified in ISO 9614.



Selection Guide for Indoor Environment Quality Analysers

Part No.:	MI 6201PR	MI 6201EU Multinorm	MI 6201ST	MI 6301PR FonS	MI 6301EU	MI 6401EU Poly	MI 6401ST
MEASUREMENTS							
Air Velocity	✓	✓	✓	-	-	✓	✓
Air Flow	✓	✓	✓	-	-	✓	✓
Relative Humidity	✓	✓	✓	-	-	✓	✓
Dew point	✓	✓	✓	-	-	✓	✓
Air teperature	✓	✓	✓	-	-	✓	✓
Temperature difference	Option	Option	Option	-	-	Option	Option
K Thermocouple temperature	Option	Option	Option	-	-	Option	Option
Illuminance	✓	✓	✓	-	-	✓	✓
Luminance	Option	Option	Option	-	-	Option	Option
Contrast	Option	Option	Option	-	-	Option	Option
Black globe radiant temperature	Option	Option	Option	-	-	Option	Option
CO concentration	Option	Option	Option	-	-	Option	Option
CO ₂ concentration	Option	Option	Option	-	-	Option	Option
Sound level, class 1 (IEC 1672)	✓	-	-	✓	-	-	-
Sound level, class 2 (IEC 1672)	-	✓	✓	-	✓	-	-
Real time 1/1 octave analysis	✓	✓	✓	✓	✓	-	-
Real time 1/3 octave analysis	✓	✓	✓	✓	✓	-	-
TEST PROBES							
A 1091 Microclimatic probe	✓	✓	✓	-	-	✓	✓
A 1127 Humidity and temperature probe	Option	Option	Option	-	-	Option	Option
A 1092 Illuminance probe, type B	✓	✓	✓	-	-	✓	✓
A 1132 Luminance probe	Option	Option	Option	-	-	Option	Option
A 1128 Thermocouple probe, type K	Option	Option	Option	-	-	Option	Option
A 1146 Sound probe, class 1	✓	-	-	✓	-	-	-
A 1151 Sound probe, class 2	-	✓	✓	-	✓	-	-
A 1131 Black globe thermometer	Option	Option	Option	-	-	Option	Option
A 1180 CO ₂ probe	Option	Option	Option	-	-	Option	Option
A 1181 CO probe	Option	Option	Option	-	-	Option	Option
PC SOFTWARE							
A 1134 SensorLink PRO	✓	✓	✓	-	-	✓	✓
A 1167 SoundLink LITE	✓	✓	✓	✓	✓	-	-
A 1162 SoundLink PRO	Option	Option	Option	Option	Option	-	-
CERTIFICATES							
ISO calibration certificate for complete system	✓	✓	-	✓	✓	✓	-
Calibration certificate	-	-	✓	-	-	-	✓

MI 6201 Multinorm

The MI 6201 Multinorm is a portable multifunctional handheld instrument for measuring microclimate, sound and light parameters and it is an invaluable tool for the monitoring and evaluation of indoor environmental conditions according to national and European standards. Specially designed housing enables connection of a few probes at the same time for testing of several parameters simultaneously. A large selection of measuring probes allows to measure variety of different environmental conditions. The SensorLink PRO and SoundLink LITE software come as standard accessories and enable downloading data stored in the memory, plotting and printing test results in table and graphic form, on-screen graph plotting for straightforward data comparison and export of data in text file format. The MI 6201EU set comes complete with full ISO accredited calibration certificate while the MI 6201PS set comes complete with ISO calibration certificate and an upgraded sound probe (class 1).

MEASUREMENTS:

- Air temperature;
- Air velocity;
- Air flow;
- Relative humidity;
- Dew point;
- Temperature difference (option);
- K thermocouple temperature (option);
- Illuminance;
- Luminance (option);
- Contrast (option);
- Black globe radiant temperature (option);
- CO and CO₂ concentration (option);
- Sound level;
- Real time 1/1 and 1/3 octave analysis.

KEY FEATURES:

- **Adaptable:** MI 6201 Multinorm can be used as either a sound meter or environmental meter to reduce the amount of measuring equipment to move between locations.
- **Environmental:** using various standard and optional probes, the MI 6201 can be adapted to measure and calculate a combination of up to 16 different environment parameters (maximum 11 at the same time).
- **Sound:** the instrument can simultaneously measure and calculate 19 different sound parameters (displaying maximum 6 at the same time).
- **Long lasting:** record up to 160 days worth of data.
- **Accommodating:** due to optional prolongation cable or telescopic rod measurements in hard-to-reach spots are possible, while mounting on a tripod enables long-lasting recording.
- **Versatile:** can be used for spot checking of different locations or performing long investigations in a specific location.
- **Easy to use:** plug in the suitable probes and the device will automatically adjust for appropriate measurements.
- **PPD and PMV calculations:** predicted



Percentage of Dissatisfied People (PPD) and Predicted Mean Vote (PMV) calculations are performed automatically.

- **Weighting:** A, C, Z frequency weightings and fast, slow and impulse time weightings.
- **Octave frequency analysis:** instrument performs real time octave and one third octave frequency analysis in accordance with EN 61260 standard.
- **Logger:** logging memory module allows to save up to 4000 measurements with adjustable integration period.
- **Downloadable:** up to 4000 test results can be stored in a two level memory structure and then downloaded to the PC with the help of the PC software.

APPLICATION:

- Indoor air quality testing;
- Testing of factory climatic conditions;

- Testing of heating, ventilation and air conditioning systems;
- Testing of lighting conditions;
- Emergency lighting systems testing;
- Indoor or dry outdoor sound level measurement;
- Industrial sound measurement;
- Band-pass and acoustic filter testing;
- Acoustic equipment testing.

STANDARDS:

Functionality:

DIN 5032 P1; DIN 5032 P2; DIN 5032 P3; DIN 5032 P4; DIN 5032 P6; DIN 5032 P7; EN 60751; EN 60584-1; EN 12599; EN ISO 7726; ISO 10526; ISO 10527

Electromagnetic compatibility:

EN 61326

Safety:

EN 61010-1

TECHNICAL SPECIFICATION:

Function	Measuring range	Resolution	Accuracy
Microclimatic probe A 1091			
- Air temperature	-20 °C ... +60 °C	0.1 °C	±0.2 °C at 25°C ±0.5 °C over working range
- Relative humidity	0 %RH ... 10 %RH	0.1 %RH	±3 %RH
	10 %RH ... 90 %RH	0.1 %RH	±2 %RH
	90 %RH ... 100 %RH	0.1 %RH	±3 %RH
- Air velocity	0.10 m/s ... 9.99 m/s	0.01 m/s	±(0.05 m/s + 5 % of reading)
	10.0 m/s ... 20.0 m/s	0.1 m/s	±(5 % of reading)
Temperature and humidity probe A 1127			
- Air temperature	-20 °C ... +60 °C	0.1 °C	±0.5 °C
- Relative humidity	0 %RH ... 100 %RH	0.1 %RH	±3 %RH
Black Globe temperature (A 1131)	10.0 °C ... 49.9 °C	0.1 °C	±0.5 °C
	50.0 °C ... 84.9 °C	0.1 °C	±1.0 °C
	85.0 °C ... 120.0 °C	0.1 °C	±1.5 °C
Illuminance (A 1092; DIN 5032, Class B)	0.01 Lux ... 19.99 Lux	0.01 Lux	±(0.02 Lux +8 % of reading)
	20.0 Lux ... 199.9 Lux	0.1 Lux	±(8 % of reading)
	200 Lux ... 1999 Lux	1 Lux	±(8 % of reading)
	2000 Lux ... 20000 Lux	10 Lux	±(8 % of reading)
Luminance (A 1132; DIN 5032, Class B)	0.1 cd/m ² ... 39.9 cd/m ²	0.1 cd/m ²	±(0.2 cd/m ² + 8% of reading)
	40 cd/m ² ... 399 cd/m ²	1 cd/m ²	±(8 % of reading)
	400 cd/m ² ... 3999 cd/m ²	1 cd/m ²	±(8 % of reading)
	4000 cd/m ² ... 40000 cd/m ²	1 cd/m ²	±(8 % of reading)
CO ₂ concentration (A 1180)	0 ppm ... 5000 ppm	1 ppm	±(3 % of reading + 40 ppm)
CO concentration (A 1181)	0 ppm ... 500 ppm	1 ppm	±(5 % of reading + 5 ppm)
Sound level (A 1146)	30 dB ... 140 dB	0.1 dB	Corresponds to EN 61672 Class 1
Sound level (A 1151)	30 dB ... 140 dB	0.1 dB	Corresponds to EN 61672 Class 2
Sound probes A 1146 and A 1151	- Dynamic range: 80 dB - Frequency weighting: A, C, Zero - Time weighting: fast, slow, impulse		
COM port	USB		
Memory	up to 4000 values		
Display	Graphical LCD with backlight, 160 x 160 dots		
Power supply	6 x 1.2 V rechargeable batteries, type AA		
Protection degree	IP 40		
Dimensions	110 x 85 x 220 mm		
Weight	0.56 kg		

STANDARD SET:

MI 6201ST

- Instrument Multinorm
- Carrying case
- Probe adapter
- Microclimatic probe
- Illumination probe, type B
- Sound probe, class 2, with foam wind-screen
- Plastic shield for microphone
- Tripod adapter
- USB cable
- Power supply adapter
- 6 x NiMH rechargeable batteries, type AA
- PC SW SensorLink PRO

- PC SW SoundLink LITE
- Instruction manual
- Calibration certificate

MI 6201EU

- MI 6201ST
- ISO calibration certificate for complete system

MI 6201PS

- MI 6201EU
- Sound probe, class 1 (A 1146) instead of Sound probe, class 2 (A 1151)



MI 6301 FonS

The MI 6301 FonS is a professional sound analyser for sound measurements in accordance with EN 61672 standard Class 1 or Class 2. The MI 6301 contains usual A, C and Z frequency weightings and fast, slow and impulse time weightings and in addition the instrument has 2 independent measuring channels which can be set to different weightings. The MI 6301 FonS is ideal for spot checking different locations or performing long term analysis of an area. The PC software SoundLink LITE included in the standard set enables downloading, review, export and printing of test results while the optional PC SW SoundLink PRO enables full data analysis, charting and report generation.

MEASUREMENTS:

- LXY (Time weighted sound level);
- LXeq (Time average sound level);
- LXYmax (Maximum time weighted sound level);
- LXYmin (Minimum time weighted sound level);
- LXpeak (Peak sound level);
- LXE (Sound exposure level);
- Percentile sound pressure level;
- Real time 1/1 octave analysis;
- Real time 1/3 octave analysis.

KEY FEATURES:

- **Adaptable:** the instrument can simultaneously measure and calculate 19 different sound parameters (displaying maximum 6 at the same time).
- **Weighting:** A, C, Z frequency weightings and fast, slow and impulse time weightings in accordance with EN 61672 standard.
- **Dual measuring:** two independent sound measuring channels that can be set to different time and weighting settings.
- **Octave frequency analysis:** instrument performs real time octave and one third octave frequency analysis in accordance with EN 61260 standard.
- **Long lasting:** record up to 80 days worth of data.
- **Versatile:** can be used for spot checking of different locations or performing long investigations in a specific location.
- **One stop readings:** according to custom configuration instrument can display MAX, MIN, peak readings, equalised readings, channel 1 and channel 2 readings.
- **Logger:** logging memory module allows to save up to 2000 measurements with adjustable integration period.
- **Downloadable:** up to 2000 test results can be stored in the two level memory structure and then downloaded to the PC with the help of the PC software.



APPLICATION:

- Indoor or dry outdoor sound level measurement;
- Industrial sound measurement;
- Acoustic equipment testing;
- Band-pass and acoustic filter testing.

STANDARDS:

Functionality: EN 61672; EN 61260
Electromagnetic compatibility: EN 61326
Safety: EN 61010-1

KEY FEATURES



Sample of on-line reading data analysis with SoundLink PRO PC software.



Logged data analysis with SoundLink PRO PC software.

TECHNICAL SPECIFICATION:

Function	Measuring range	Resolution	Accuracy
Sound level (A 1146)	30 dB ... 140 dB	0.1 dB	Corresponds to EN 61672 Class 1
Sound level (A 1151)	30 dB ... 140 dB	0.1 dB	Corresponds to EN 61672 Class 2
Sound probes A 1146 and A 1151	- Dynamic range: 80 dB - Frequency weighting: A,C, Zero - Time weighting: fast, slow, impulse		
COM port	USB		
Memory	2000 values		
Display	Graphical LCD with backlight, 160 x 160 dots		
Power supply	6 x 1.2 V rechargeable batteries, type AA		
Protection degree	IP 40		
Dimensions	110 x 85 x 220 mm		
Weight	0.56 kg		

STANDARD SET:

MI 6301EU

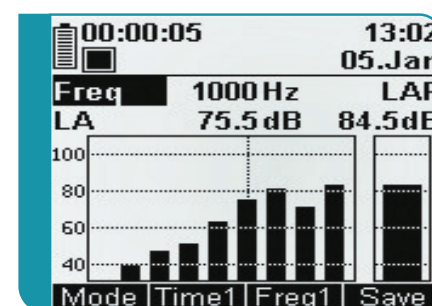
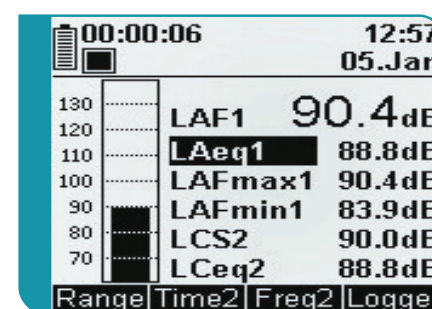
- Instrument FonS
- Carrying case
- Sound probe, class 2, with foam wind-screen
- Plastic shield for microphone
- Tripod adapter
- USB cable
- Power supply adapter
- 6 x NiMH rechargeable batteries, type AA

MI 6301PS

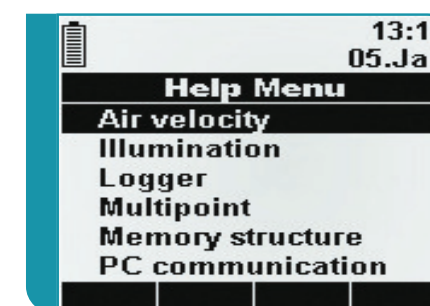
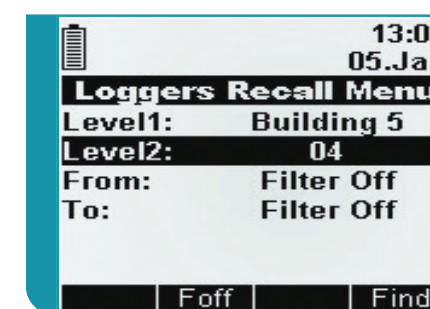
- PC SW SoundLink LITE
- Instruction manual
- Calibration certificate
- ISO calibration certificate for complete system
- MI 6301EU
- Sound probe, class 1 (A 1146) instead of Sound probe, class 2 (A 1151)



KEY FEATURES



Sound measurement, 1/1 and 1/3 octavian analysis.



Recalling of memory, sample of help menu.



MI 6401 Poly

The MI 6401 Poly is a portable multifunctional handheld instrument for measuring microclimate and light parameters such as illuminance, humidity, air temperature and air velocity of an environment. Emergency lighting, ventilation systems, lighting conditions, air conditioning systems, factory conditions, production line conditions and many more can be tested by the MI 6401. Specially designed housing enables connection of a few probes at the same time for testing of several parameters simultaneously. All the results can be stored in the internal memory of the instrument and then downloaded to PC via the SensorLink PRO software which is included in the standard set. For full data traceability to international standards the MI 6401EU set includes a full ISO accredited calibration certificate.

MEASUREMENTS:

- Air temperature;
- Air velocity;
- Air flow;
- Relative humidity;
- Dew point;
- Temperature difference (option);
- K thermocouple temperature (option);
- Illuminance;
- Luminance (option);
- Contrast (option);
- Black globe radiant temperature (option);
- CO and CO₂ concentration (option).

KEY FEATURES:

- **Adaptable:** using various standard and optional probes, the MI 6401 can be adapted to measure and calculate a combination of up to 16 different environments conditions (maximum 11 at the same time).
- **Long lasting:** record up to 160 days worth of data.
- **Accommodating:** due to optional prolongation cable or telescopic rod measurements in hard-to-reach spots are possible, while mounting on a tripod enables long-lasting recording.
- **Versatile:** can be used for spot checking of different locations or performing long investigations in a specific location.
- **Easy to use:** plug in the suitable probes and the device will automatically adjust for appropriate measurements.
- **PPD and PMV calculations:** predicted Percentage of Dissatisfied People (PPD) and Predicted Mean Vote (PMV) calculations are performed automatically.
- **Logger:** logging memory module allows to save up to 4000 measurements with adjustable integration period.



- **Downloadable:** up to 4000 test results can be stored in a two level memory structure and then downloaded to the PC with the help of the PC software SensorLink PRO.

APPLICATION:

- Indoor air quality testing;
- Testing of factory climatic conditions;
- Testing of heating, ventilation and air conditioning systems;
- Testing of lighting conditions;
- Emergency lighting systems testing.

STANDARDS:

Functionality:

DIN 5032 P1; DIN 5032 P2; DIN 5032 P3; DIN 5032 P4; DIN 5032 P6; DIN 5032 P7; EN 60751; EN 60584-1; EN 12599; EN ISO 7726; ISO 10526; ISO 10527

Electromagnetic compatibility:

EN 61326

Safety:

EN 61010-1

TECHNICAL SPECIFICATION:

Function	Measuring range	Resolution	Accuracy
Microclimatic probe A 1091			
- Air temperature	-20 °C ... +60 °C	0.1 °C	±0.2 °C at 25°C ±0.5 °C over working range
- Relative humidity	0 %RH ... 10 %RH 10 %RH ... 90 %RH 90 %RH ... 100 %RH	0.1 %RH 0.1 %RH 0.1 %RH	±3 %RH ±2 %RH ±3 %RH
- Air velocity	0.10 m/s ... 9.99 m/s 10.0 m/s ... 20.0 m/s	0.01m/s 0.1m/s	±(0.05 m/s + 5% of reading) ±(5% of reading)
Temperature and humidity probe A 1127			
- Air temperature	-20 °C ... +60 °C	0.1 °C	±0.5 °C
- Relative humidity	0 %RH ... 100 %RH	0.1 %RH	±3 %RH
Black Globe temperature (A 1131)	10.0 °C ... 49.9 °C 50.0 °C ... 84.9 °C 85.0 °C ... 120.0 °C	0.1 °C 0.1 °C 0.1 °C	±0.5 °C ±1.0 °C ±1.5 °C
Illuminance (A 1092; DIN 5032, Class B)	0.01 Lux ... 19.99 Lux 20.0 Lux ... 199.9 Lux 200 Lux ... 1999 Lux 2000 Lux ... 20000 Lux	0.01 Lux 0.1 Lux 1 Lux 10 Lux	±(0.02 Lux +8 % of reading) ±(8 % of reading) ±(8 % of reading) ±(8 % of reading)
Luminance (A 1132; DIN 5032, Class B)	0.1 cd/m ² ... 39.9 cd/m ² 40 cd/m ² ... 399 cd/m ² 400 cd/m ² ... 3999 cd/m ² 4000 cd/m ² ... 40000 cd/m ²	0.1 cd/m ² 1 cd/m ² 1 cd/m ² 1 cd/m ²	±(0.2 cd/m ² + 8 % of reading) ±(8 % of reading) ±(8 % of reading) ±(8 % of reading)
CO ₂ concentration (A 1180)	0 ppm ... 5000 ppm	1 ppm	±(3 % of reading + 40 ppm)
CO concentration (A 1181)	0 ppm ... 500 ppm	1 ppm	±(5 % of reading + 5 ppm)
COM port	USB		
Memory	4000 values		
Display	Graphical LCD with backlight, 160 x 160 dots		
Power supply	6 x 1.2 V rechargeable batteries, type AA		
Protection degree	IP 40		
Dimensions	110 x 85 x 220 mm		
Weight	0.56 kg		

STANDARD SET:

MI 6401ST

- Instrument Poly
- Carrying case
- Probe adapter
- Microclimatic probe
- Illumination probe, type B
- Tripod adapter
- USB cable
- Power supply adapter
- 6 x NiMH rechargeable batteries, type AA

- PC SW SensorLink PRO
- Instruction manual
- Calibration certificate

MI 6401EU

- MI 6401ST
- ISO calibration certificate for complete system



SensorLink

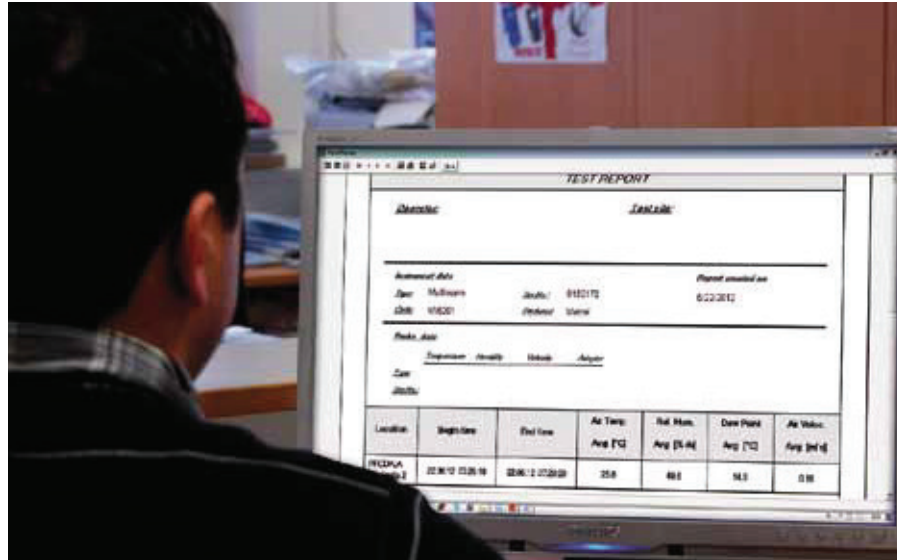
The SensorLink software works in conjunction with Metrel downloadable Indoor Environment Quality testers. The software automatically recognizes connected instrument and allows the customer to download test results saved on the instrument, review the results and print test reports. The Sensor Link is compatible with Metrel instruments MI 6201 Multinorm and MI 6401 Poly.

KEY FEATURES:

- **Automatic recognition of the instrument:** connected instrument to the PC is automatically recognized by the software.
- **Logger, Memory, Download:** Stored and downloaded data from the instrument could be organized, selected to group, viewed and compared for analyzing in graphs and tabelaric forms and printed in a report form.
- **Export of test results:** test results in text format can be exported to other programs (MS Excel, MS Word).
- **Test Reports:** automatic generation of test reports from the selected views and data with attached graphs.

PC SW SensorLink is compatible with:

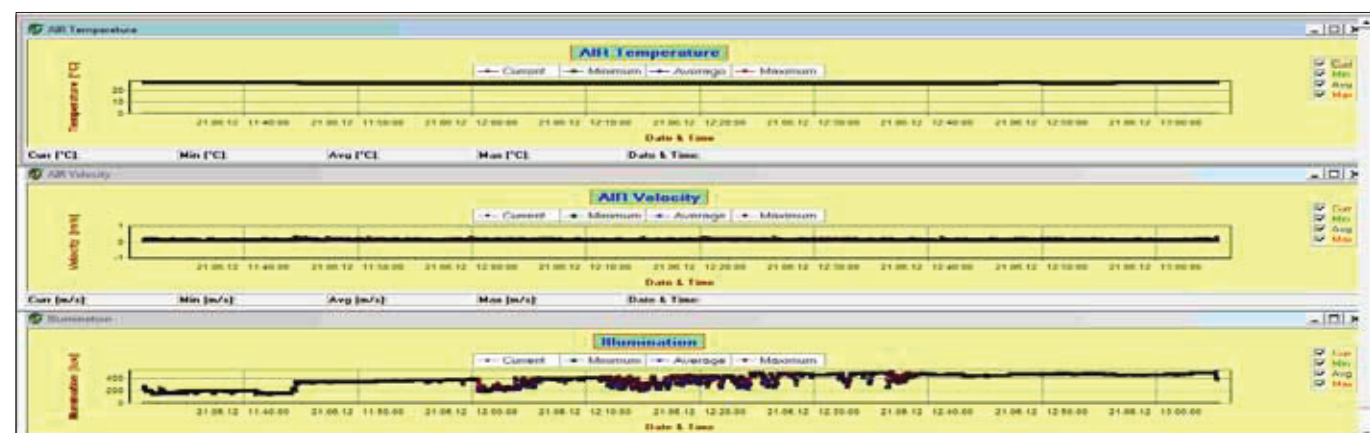
- MI 6201 Multinorm
- MI 6401 Poly



No	Time	Air Temp		Air Temp Avg [°C]	Air Temp		Rel Hum. Min [E-H]	Rel Hum. Max [E-H]	Rel Hum. Avg [E-H]	Dew Point Min [°C]	Dew Point Max [°C]	Dew Point Avg [°C]
		Cur [°C]	Min [°C]		Max [°C]	Cur [E-H]						
1	21.08.12 11:16:14	26.7	26.7	26.7	26.7	46.1	46.1	46.1	14.2	14.2	14.2	
2	21.08.12 11:21:18	26.7	26.7	26.7	26.7	46.2	46.1	46.2	14.2	14.2	14.2	
3	21.08.12 11:26:24	26.7	26.7	26.7	26.7	45.9	46.0	46.0	14.1	14.1	14.2	
4	21.08.12 11:31:28	26.7	26.7	26.7	26.9	45.5	45.5	45.5	14.0	14.0	14.0	
5	21.08.12 11:36:34	26.7	26.7	26.7	26.9	45.1	45.1	45.1	13.9	13.9	13.9	
6	21.08.12 11:41:38	26.7	26.7	26.7	26.7	46.3	46.0	46.1	13.8	13.8	13.8	
7	21.08.12 11:46:44	26.7	26.7	26.7	26.7	46.7	46.0	46.0	13.7	13.7	13.7	
8	21.08.12 11:51:48	26.7	26.7	26.7	26.7	46.5	46.0	46.7	13.6	13.6	13.7	
9	21.08.12 11:56:54	26.7	26.7	26.7	26.7	46.5	46.7	46.5	13.6	13.6	13.6	
10	21.08.12 12:01:58	26.7	26.7	26.7	26.7	46.4	46.4	46.5	13.6	13.6	13.6	
11	21.08.12 12:06:04	26.6	26.6	26.6	26.6	46.5	46.4	46.4	13.6	13.5	13.6	
12	21.08.12 12:11:08	26.6	26.6	26.6	26.6	46.5	46.4	46.5	13.6	13.5	13.6	
13	21.08.12 12:16:14	26.6	26.6	26.6	26.6	46.5	46.5	46.5	13.6	13.5	13.6	
14	21.08.12 12:21:18	26.6	26.6	26.6	26.6	46.0	46.5	46.5	13.6	13.6	13.6	
15	21.08.12 12:26:24	26.6	26.6	26.6	26.6	46.9	46.4	46.7	13.7	13.6	13.6	
16	21.08.12 12:31:28	26.6	26.6	26.6	26.6	45.1	46.3	46.1	13.8	13.7	13.7	
17	21.08.12 12:36:34	26.6	26.6	26.6	26.6	45.0	46.0	46.1	13.7	13.7	13.7	
18	21.08.12 12:41:38	26.6	26.6	26.6	26.6	45.0	46.0	46.0	13.7	13.7	13.7	

Table with downloaded results of all connected probes

Draw a graphs of logged parameters

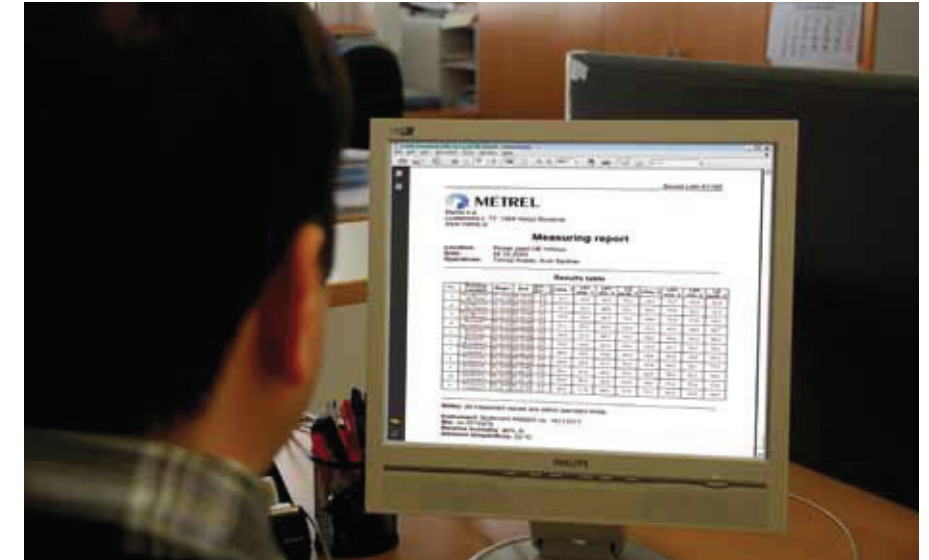


SoundLink

The Sound Link software works as a program for downloading, storing and retrieving measurement data from Metrel instruments MI 6201 Multinorm and MI 6301 FonS.

KEY FEATURES:

- **User friendly interface:** wide range of quick icons, for downloading, exporting, viewing and reorganizing data.
- **Structure organized data:** downloaded data are organized into tree structure where the locations could be renamed and / or equipped with comments.
- **Data filtering** and combining logger measurements as a function of time.
- **Zoom in Logger window:** Drag it and zoom rectangle will be drawn.
- **Spectrum window:** graph area and values area will show Octave and 1/3 Octave bars for analysis where selected logger or single 1/3 result shows four broadband values and 27 spectral components of the signal. Broadband values are shown as blue bars and every spectral component is shown as one bar with three different colours (each one for minimum, average and maximum).
- **Results window:** shows in tabular form values of measurements added from Tree window. Location name, start and end time and selected measurements are displayed in each line of table.

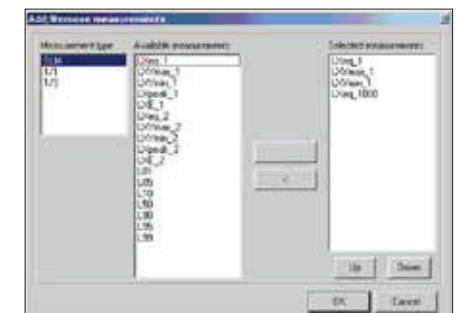
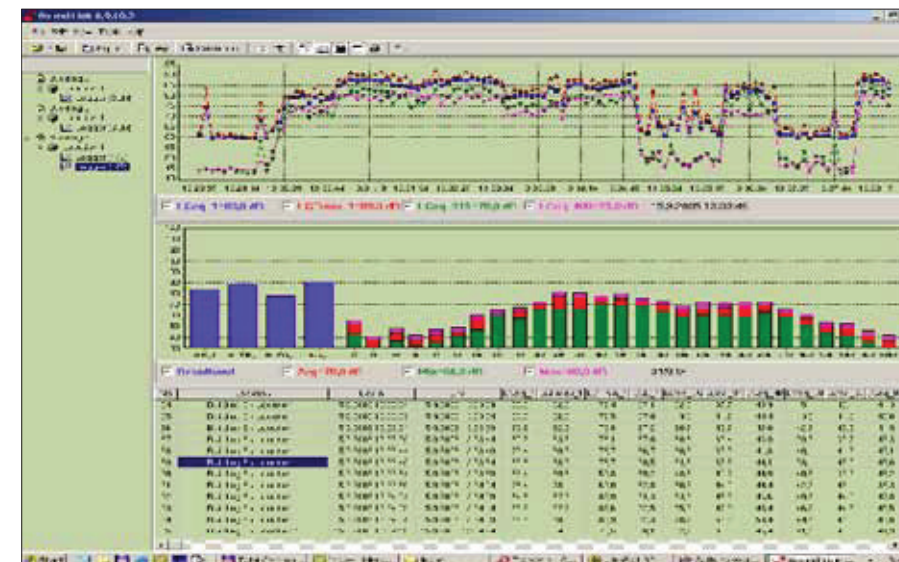


- **Add/remove measurements dialog:** In the same dialog you can select or deselect measurements that will be displayed in the table of Results window.
- **Export of test results:** test results can be exported to other programs (MS Excel, MS Word).

- **Test Reports:** automatic generation of test reports from the selected views and data with attached graphs.

PC SW SoundLink is compatible with:

- MI 6201 Multinorm
- MI 6301 FonS



Measurements dialog offering wide range of available recorded measurements from instrument to be added or removed from analysis.

SoundLink PC SW Tool for Analysing and Reporting

Selection Guide for IEQ Accessories

Photo	Part number	Description	Target application	MI 6401	MI 6301	MI 6201
	A 1165	Sound calibrator, class 2	Sound calibrator Class 2 is intended for periodical calibration and accuracy inspection of the instrument.	-	✓	✓
	A 1152	Sound calibrator, class 1	Sound calibrator Class 1 is intended for periodical calibration and accuracy inspection of the instrument.	-	✓	✓
	A 1180	CO ₂ probe	Probe measures concentration of carbon dioxide in the ambient air.	✓	-	✓
	A 1181	CO probe	Probe measures concentration of carbon monoxide in the ambient air.	✓	-	✓
	A 1127	Humidity and temperature probe	Probe for simultaneous relative humidity and air temperature measurements.	✓	-	✓
	A 1131	Black globe thermometer	Black globe thermometer serves for indoor temperature comfort measurements.	✓	-	✓
	A 1132	Luminance probe	Luminance probe performs measurement of luminance i.e. light reflected from the surface.	✓	-	✓
	A 1128	Thermocouple probe, type K	Type K thermocouple probe with measuring range from -20 °C to 1400 °C for contact temperature measurements of various surfaces like motors, transformers, etc.	✓	-	✓
	A 1083	Power supply adapter with 6 pcs NiMH batteries, type AA	Battery charger and a set of 6 pieces of rechargeable batteries, type AA.	✓	✓	✓
	A 1160	Fast charger for 8 AA batteries with a set of 6 NiMH bat., type AA	Fast battery charger for up to 8 pieces of AA rechargeable batteries, and a set of 6 pcs NiMH rechargeable batteries, type AA.	✓	✓	✓
	A 1169	Fast charger for AA, C, D and 9 V block batteries	Fast battery charger for up to 12 pcs AA, 6 pcs C or D rechargeable batteries, 4 pcs 9 V block batteries.	✓	✓	✓
	A 1130	Telescopic rod with 2.5 m cable	The extension rod helps at measurements on remote spots like ventilation ducts and other places that cannot be easily reached by hand.	✓	-	✓

✓ Option - Not available

Selection Guide for IEQ Accessories

Photo	Part number	Description	Target application	MI 6401	MI 6301	MI 6201
	A 1145	Extension cable for A 1092 and A 1132, 1 m	1 m long extension cable can be used in combination with luminance and illuminance probe for measurements on remote spots.	✓	-	✓
	A 1159	Tripod	Tripod is used for instrument fixing at long term measurements of sound and other indoor air quality parameters.	✓	✓	✓
	A 1161	Tripod holder for black globe thermometer	Tripod holder assures fixing of the test instrument and Black globe thermometer on tripod.	✓	-	✓
	A 1162	PC SW SoundLink PRO	SoundLink PRO is a complete PC software for downloading, test data evaluation, profound sound analysis and test report creation.	-	✓	✓

✓ Option - Not available

Study the world
Capture the elements
Environmental testing made easy

MI 6201
Multinorm

MI 6401
Poly

MI 6301
FonS



MEASURING INSTRUMENTS AND TESTERS

- Electrical Installation Safety
- High Voltage Insulation / Continuity / Earth
- Appliance / Machine / Switchboard Safety
- Power Quality Analysis
- LAN Cabling Certification
- Indoor Environment Quality
- Digital Multimeters / Clamp Meters / Voltage and Continuity Testers
- Variable transformers /
- Equipment for laboratories and Schools

GOOD TO KNOW			
Digital Multimeters / Clamp Meters / Voltage and Continuity Tester	7	-	02
DIGITAL MULTIMETERS			
Selection Guide for Digital Multimeters	7	-	03
MD 9060 TRMS, 500.000 counts LCD, 100kHz Voltage Bandwidth	7	-	06
Heavy Duty Industrial Multimeter NEW	7	-	08
MD 9050 TRMS Heavy Duty Industrial Digital Multimeter	7	-	09
MD 9040 TRMS Industrial Digital Multimeter	7	-	10
MD 9035 Automotive Multimeter Designed to Work On Real-World Car Signals NEW	7	-	11
MD 9030 TRMS General Purpose Digital Multimeter	7	-	12
MD 9020 General Purpose Digital Multimeter	7	-	13
MD 9016 TRMS Power Clamp Meter, 3-Phase, Unbalanced-Load NEW	7	-	14
MD 9015 Electrical Field Service Digital Multimeter	7	-	15
MD 9010 General Purpose Autocheck Digital Multimeter	7	-	
CLAMP METERS			
Selection Guide for Clamp Meters	7	-	16
MD 9270 Leakage Clamp TRMS Meter with Power Functions	7	-	18
MD 9250 Industrial TRMS AC/DC CAT IV /1000 V NEW	7	-	19
MD 9240 TRMS Power Clamp Meter	7	-	20
MD 9235 TRMS Power Clamp Meter, 3-Phase, Unbalanced-Load NEW	7	-	21
MD 9230 Industrial TRMS AC/DC Current Clamp Meter	7	-	22
MD 9225 Most Complete Industrial TRMS AC/DC Current Clamp Meter NEW	7	-	23
MD 9220 TRMS Current Clamp Meter	7	-	24
MD 9210 Mini Clamp Meter	7	-	25
VOLTAGE AND CONTINUITY TESTER			
Selection Guide for Voltage and Continuity Testers	7	-	26
MD 1150 LED Voltage / Continuity Tester	7	-	27
MD 1050 LCD Voltage / Continuity Tester	7	-	28
NON CONTACT VOLTAGE DETECTORS			
MD 115 Non Contact Voltage Detector	7	-	29
MD 105 Non Contact Voltage Detector	7	-	29
Selection Guide for DMM Accessories	7	-	30