


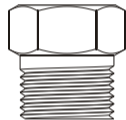

Warnings and cautions

- > Operate the pump in the rated pressure range, do not over the safety pressure (105MPa)
- > Close the valves and tighten the plugs in transportation or hand carrying
- > Always open the release valve during operation
- > Do not over tighten the connectors or handles to avoid any damage
- > Change the contaminated media immediately
- > Do not let the media level below to the mid line of reservoir
- > Keep the outer threads clean
- > Should collect the liquid by using a cup or other vessels, when the spill valve and release valve is opened
- > Any security problems or damages caused by incorrect operations is beyond ConST group's responsibility

Specifications

- > **Pressure range:** (-0.09 to 0 to 70)MPa
 - > **Temperature:** (0~50)C
 - > **Humidity:** < 95%RH
 - > **Adjusting fineness:** 0.0001MPa
 - > **Safety pressure:** < 105MPa
 - > **Pressure media:** Oil or deionized water which is compatible with copper, 304 Stainless Steel, TYZOR BTP and Buna N.
 - > **Size:** ConST181/182: 475*340*260mm (885*340*260mm for ConST185)
 - > **Weight:** ConST181/182: 16Kg (22Kg for ConST185)
- Remark: If atmosphere pressure is 100KPa, the vacuum can reach to -0.09MPa; If local atmosphere is P, the vacuum can reach to -0.09P.*

Accessories

O-ring	plug	funnel
ZL200620119357.2	M20 × 1.5	
		
× 20	(ConST181/182) × 3 (ConST185) × 5	× 1



让校准更轻松!
Calibration can be easy!

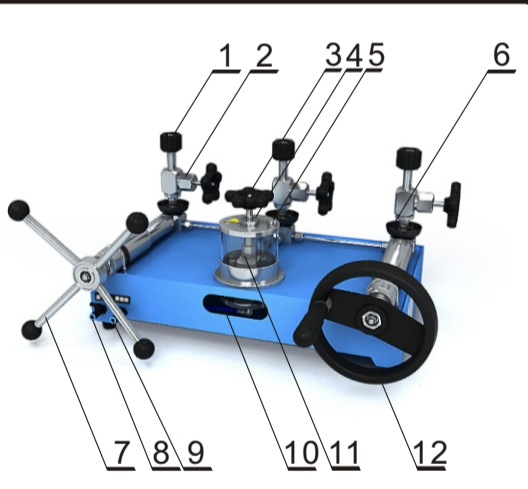
ConST® 181/182

Hydraulic Pressure Pump User's Manual

(This manual is suitable for ConST185, too.)

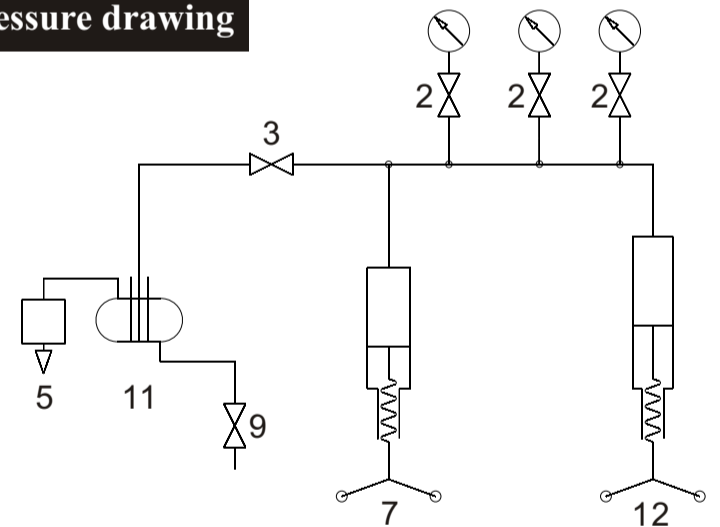


Configuration & pressure drawing



1. M20*1.5 quick connector
2. Shut-off valve (for quick connector)
3. Shut-off valve (for fluid reservoir)
4. Filler entrance
5. Vent valve (air)
6. Release liquid cup
7. Pressure adjustable vernier control (clockwise to increase pressure)
8. Spill valve (liquid)
9. Release valve (liquid)
10. Window
11. Fluid reservoir
12. Coarse adjustment handles (clockwise to increase pressure)

pressure drawing



Troubleshooting

Problems	Causes	Solutions
Hard to coarsely adjust	A. Isolating valve is not closed.	Close the isolating valve.
	B. The O-ring is broken or loosen.	Replace sealing ring (PR#:ZL200620119357.2).
	C. The media is not enough.	Fill adequate media in reservoir.
	D. more air in the system.	Release the air out from system by using coarse adjustment handles.
Hard to fine adjust	A. The isolating valve is not closed.	Close the isolating valve.
	B. The gauges are not connected tightly.	Turn the gauges tightly.
	C. The O-ring is aged or frayed.	Replace O-ring.
	D. The thread surface is not smooth.	Put in a Teflon seals and turn it tightly.
	E. The connector type is unmatched.	Use the right and suitable adapter.
Hard to rotate the screws	A. Too tightly turned last time!	Do not over tighten the valves.
	B. The pressure maybe not adjustable by coarse adjustment handle under high pressure.	Adjust pressure using fine adjust handles.
	C. The new pump maybe not smooth.	The new pump needs time to abrade.
	D. The threads have no lubrication.	Lubricate the thread.