

HANDHELD BATTERY DIAGNOSTICS

PITE3915 Battery Tester

Fast voltage and internal resistance / conductance testing for standby battery maintenance.

Regular battery maintenance is essential for standby power reliability. The PITE3915 helps technicians quickly test cell voltage and internal resistance / conductance, identify weak cells, compare results against reference values and export maintenance records for long-term tracking.

- Wide 5-6000 Ah test range for 1.2V, 2V, 6V and 12V cells.
- Simultaneously tests voltage and internal resistance / conductance in seconds.
- Low test frequency helps avoid interference from capacitive resistance.
- Stores more than 3,000 cell records for field maintenance routes.
- USB data transfer and DataView software support Excel-ready reporting.



PITE3915 standard battery tester kit with handheld tester, probe pin, test clamp, charging adaptor, USB converter and carrying bag.

<p>CAPACITY RANGE</p> <p>5-6000 Ah</p>	<p>CELL VOLTAGE</p> <p>1.2V / 2V / 6V / 12V</p>	<p>VOLTAGE RANGE</p> <p>0.000-16V</p>
<p>RESOLUTION</p> <p>0.1 mΩ / 1 mV</p>	<p>STRING SIZE</p> <p>1-254 cells</p>	<p>DATA MEMORY</p> <p>>3,000 cells</p>

Designed for routine standby battery testing. The handheld design, color touch screen, keyboard operation and rugged accessories make the PITE3915 suitable for battery rooms, telecom sites, UPS systems, utility substations and industrial backup power systems.

Standard kit includes

The core package ships with the tester, both contact options, charging hardware, software media and carry essentials for routine battery maintenance.

- | | | |
|---------------------|------------------|-------------------------------|
| 1* PITE3915 | 1* Test Clamp | 1* Probe Pin |
| 1* Charging Adaptor | 1* USB Converter | 1* 4G USB Flash with software |
| 1* User Manual | 1* Packing List | 1* Carry Bag |

Technical data

Core measurement, storage, display and operating parameters for handheld standby battery diagnostics.

Battery capacity range	5-6000 Ah
Compatible cell voltage	1.2V, 2V, 6V and 12V
Voltage range	0.000V-16V
Resistance minimum resolution	0.1 mΩ
Voltage minimum resolution	1 mV
Resistance test accuracy	±1.0% rdg ±6 dgt
Voltage test accuracy	±0.2% rdg ±6 dgt
Measuring cells per string	1-254 cells
Data memory	More than 3,000 cells
Display	320 × 240 px, 3.5 in TFT touch screen
Power supply	7.2V / 2400 mAh Li-ion battery
Working time	More than 5 hours
Operating environment	0°C to 40°C, 90% R.H.
Net weight	2 kg
Dimensions	L210 × W110 × H60 mm

Probe pins and test clamps for flexible field contact.

The standard package comes with both a probe pin and a test clamp. Use either accessory depending on terminal access, rack spacing and inspection speed requirements.



PROBE PIN

Fast contact for compact racks.

Probe pins are useful where terminals are dense, clamp access is limited, or technicians need quick point contact during sequential cell checks.



TEST CLAMP

Stable contact for repeat testing.

Test clamps provide hands-free contact for larger terminals, routine string inspections and repeat measurements where stable connection is preferred.

From field readings to maintenance records.

The PITE3915 combines fast cell measurement, automatic data saving, reference comparison and PC reporting into one portable workflow.

<p>01</p> <p>Set battery information</p> <p>Create a site, string and cell record, then select built-in or user-defined reference values.</p>	<p>02</p> <p>Measure each cell</p> <p>Use the probe pin or test clamp to capture voltage and internal resistance / conductance in seconds.</p>	<p>03</p> <p>Review cell status</p> <p>Compare readings with reference thresholds and use buzzer alerts to identify weak or abnormal cells.</p>	<p>04</p> <p>Export reports</p> <p>Transfer data by USB, organize records in DataView and export maintenance reports to Microsoft Excel.</p>
---	--	---	--

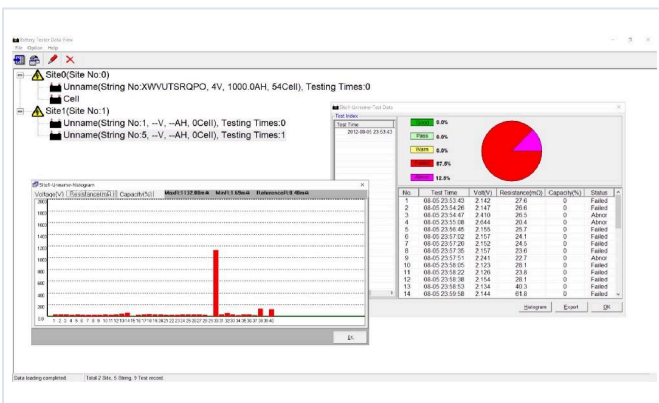
Field-ready advantages

- Smart portable handheld design with colorful touch screen and keypad operation.
- Strong anti-interference performance in high-current environments for stable readings.
- Built-in reference values and self-defined thresholds simplify result comparison.
- Buzzer alarm and over-voltage protection support safer on-site inspection.
- Fast battery and string testing with automatic data saving after each measurement.
- Auto-calibration before testing improves measurement accuracy and repeatability.
- Retest and compensation functions help correct missed cells or faulty operations.
- Direct USB flash drive support for software update and data transfer to computer.

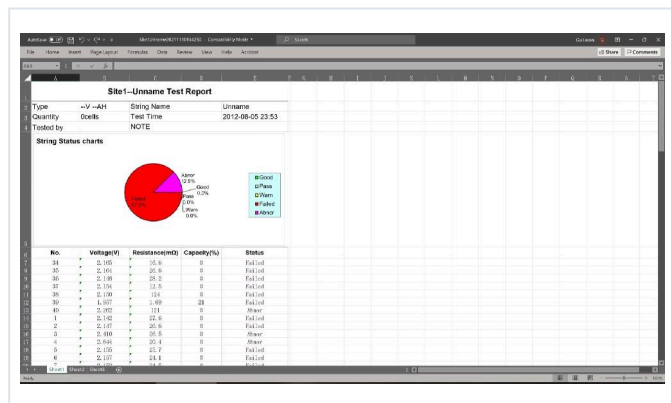
DataView software for analysis and reporting.

The included DataView software uploads test data from the USB drive, groups records by site and string, displays detailed tables and graphs, and exports data directly to Microsoft Excel.

<p>TABLE VIEW</p> <p>Voltage, resistance and status records</p>	<p>GRAPH VIEW</p> <p>Visual comparison across the string</p>	<p>DATA GROUPING</p> <p>Organize by site, battery and test date</p>	<p>EXCEL EXPORT</p> <p>Ready for maintenance documentation</p>
---	--	---	--



Histogram and table views help identify weak or abnormal cells quickly.



Export test results directly to Microsoft Excel for maintenance records.