

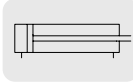
COMPONENTS OF HYDRAULICS TRANSPARENCY ESSENTIAL COMPONENTS

THT-7964-1

01

Transparent Double
Acting Cylinder

tHD-2510

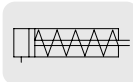


- Maximum Operating Pressure : 5Mpa(50kgf/cm²)
- Operating Pressure : 3.5Mpa(35kgf/cm²)
- Cylinder's Inside Diameter : $\varnothing 25$
- Stroke Distance : 100mm
- Piston Rod's Diameter : $\varnothing 14$

02

Transparent Single
Acting Cylinder

tHS-2510

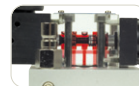
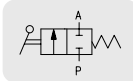


- Maximum Operating Pressure : 5Mpa(50kgf/cm²)
- Operating Pressure : 3.5Mpa(35kgf/cm²)
- Cylinder's Inside Diameter : $\varnothing 25$
- Stroke Distance : 100mm
- Piston Rod's Diameter : $\varnothing 14$

03

2/2-Way Directional
Control Valve

tDV-622H-C

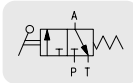


- Maximum Operating Pressure : 5Mpa(50kgf/cm²)
- Operating Pressure : 3.5Mpa(35kgf/cm²)
- Normal Flow : 9l/min
- Type of Operation : Manual Lever
- Type of Return : Spring Return
- Normally Close type

04

3/2-Way Directional
Control Valve

tDV-632H

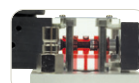
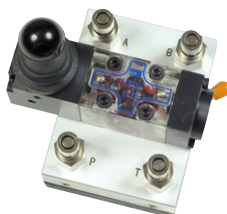
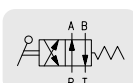


- Maximum Operating Pressure : 5Mpa(50kgf/cm²)
- Operating Pressure : 3.5Mpa(35kgf/cm²)
- Normal Flow : 9l/min
- Type of Operation : Manual Lever
- Method of Return : Spring Return

05

4/2-Way Directional
Control Valve

tDV-642H



- Maximum Operating Pressure : 5Mpa(50kgf/cm²)
- Operating Pressure : 3.5Mpa(35kgf/cm²)
- Normal Flow : 9l/min
- Type of Operation : Manual Lever
- Method of Return : Spring Return

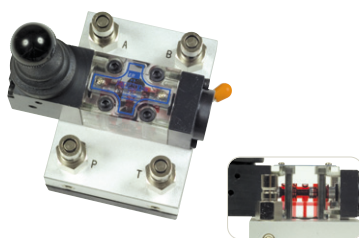
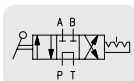
COMPONENTS OF HYDRAULICS TRANSPARENCY ESSENTIAL COMPONENTS

THT-7964-1

06

4/3-Way Directional Control Valve

tDV-643H-B

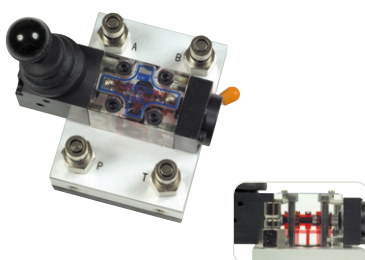
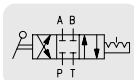


- Maximum Operating Pressure : 5Mpa(50kgf/cm²)
- Operating Pressure : 3.5Mpa(35kgf/cm²)
- Normal Flow : 9l/min
- Type of Operation : Manual Lever, Detent(lock) Function
- P-T Junction Type

07

4/3-Way Directional Control Valve

tDV-643H-C

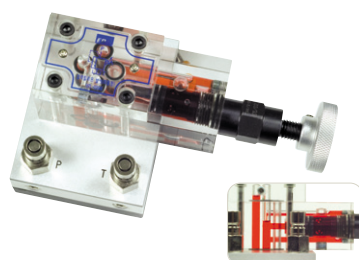
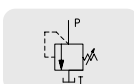


- Maximum Operating Pressure : 5Mpa(50kgf/cm²)
- Operating Pressure : 3.5Mpa(35kgf/cm²)
- Normal Flow : 9l/min
- Type of Operation : Manual Lever, Detent(lock) Function
- P-A-B-T Shut-off Type

08

Pressur Relief Valve (Direct Acting)

tPL-025H

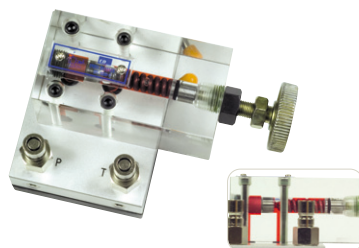
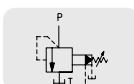


- Maximum Operating Pressure : 5Mpa(50kgf/cm²)
- Operating Pressure : 3.5Mpa(35kgf/cm²)
- Normal Flow : 35l/min
- Type of Operation : Hydraulic
- Control Mode : Manual

09

Pressur Relief Valve (Indirect Acting)

tPL-025H-I

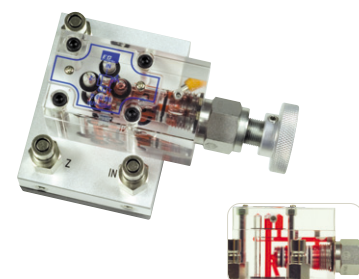
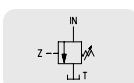


- Maximum Operating Pressure : 5Mpa(50kgf/cm²)
- Operating Pressure : 3.5Mpa(35kgf/cm²)
- Type of Operation : Hydraulic
- Control Mode : Manual

10

Unloading Valve

tUV-025H



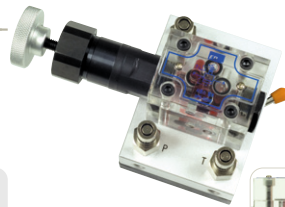
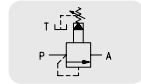
- Maximum Operating Pressure : 5Mpa(50kgf/cm²)
- Operating Pressure : 3.5Mpa(35kgf/cm²)
- Normal Flow : 35l/min
- Type of Operation : Hydraulic
- Control Mode : Manual
- No Load Valve

COMPONENTS OF HYDRAULICS TRANSPARENCY ESSENTIAL COMPONENTS

THT-7964-1

11

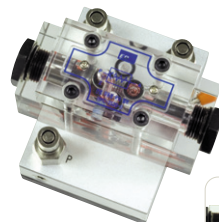
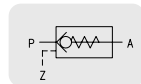
Sequence Valve
tPS-025H



- Maximum Operating Pressure : 5Mpa(50kgf/cm²)
- Operating Pressure : 3.5Mpa(35kgf/cm²)
- Normal Flow : 35l/min
- Type of Operation : Hydraulic
- Control Mode : Manual
- Purpose of Use : Sequential Control

12

**Indirect Acting
Check Valve**
tPC-2520-I



- Maximum Operating Pressure : 5Mpa(50kgf/cm²)
- Operating Pressure : 3.5Mpa(35kgf/cm²)
- Normal Flow : 35l/min
- Type of Operation : Hydraulic
- Cracking Pressure : 0.2Mpa(2kgf/cm²)

13

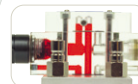
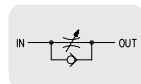
External Gear Motor
tSGM-4025



- Maximum Operating Pressure : 5Mpa(50kgf/cm²)
- Operating Pressure : 3.5Mpa(35kgf/cm²)
- Type of Operation : Hydraulic

14

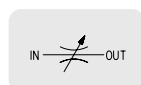
**Single-Directional Flow
Control Valve**
tOC-2535H



- Maximum Operating Pressure : 5Mpa(50kgf/cm²)
- Operating Pressure : 3.5Mpa(35kgf/cm²)
- Normal Flow : 35l/min
- Check Open Pressure : 0.1Mpa(1kgf/cm²)
- Control Mode : Manual

15

**Bi-Directional Flow
Control Valve**
tFV-2535H



- Maximum Operating Pressure : 5Mpa(50kgf/cm²)
- Operating Pressure : 3.5Mpa(35kgf/cm²)
- Normal Flow : 35l/min
- Control Mode : Manual

COMPONENTS OF HYDRAULICS TRANSPARENCY ESSENTIAL COMPONENTS

THT-7964-1

16

Pressure-Compensated Flow Control Valve

tFV-2515H-C

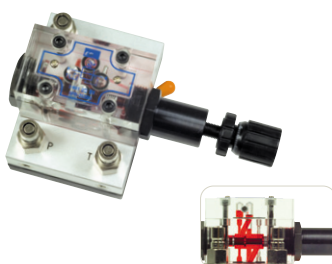
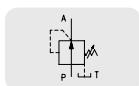


- Maximum Operating Pressure : 5Mpa(50kgf/cm²)
- Operating Pressure : 3.5Mpa(35kgf/cm²)
- Normal Flow : 15l/min
- Control Mode : Manual

17

3-Way Pressure Reducing Valve

tPR-2535H

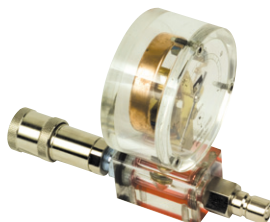
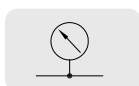


- Maximum Operating Pressure : 5Mpa(50kgf/cm²)
- Operating Pressure : 3.5Mpa(35kgf/cm²)
- Normal Flow : 35l/min
- Type of Operation : Hydraulic
- Control Mode : Manual
- Purpose of Use : Pressure Regulator

18

Pressure Gauge

tPG-100

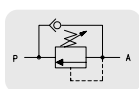


- Measurement Range : 0~5Mpa(0~50kgf/cm²)
- Operating Pressure : 35kgf/cm²
- Type of Operation : Hydraulic
- Gauge's Diameter : ø60

19

Counter Balance Valve

tCB-2535H

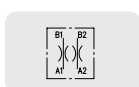


- Maximum Operating Pressure : 5Mpa(50kgf/cm²)
- Operating Pressure : 3.5Mpa(35kgf/cm²)
- Normal Flow : 35l/min
- Type of Operation : Hydraulic
- Control Mode : Manual
- Purpose of Use : Prevention from falling free

20

Transparent Throttle Block

tTB-0230



- Maximum Operating Pressure : 5Mpa(50kgf/cm²)
- Throttle's Diameter : ø2
- Throttle's Length : 30mm

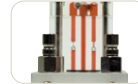
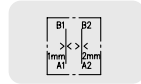
COMPONENTS OF HYDRAULICS TRANSPARENCY ESSENTIAL COMPONENTS

THT-7964-1

21

Transparent Orifice Block

tOB-0102



- Maximum Operating Pressure : 5Mpa(50kgf/cm²)
- Orifice A Diameter : $\phi 1$
- Orifice B Diameter : $\phi 2$
- Orifice's Length : 5mm

22

T Type Connector

tTCO-2503

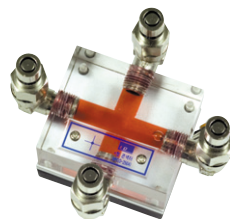


- Maximum Operating Pressure : 5Mpa(50kgf/cm²)
- Operating Pressure : 3.5Mpa(35kgf/cm²)
- Purpose of Use : Circuit Connection(Divergence)

23

+ Type Connector

tPCO-2504



- Maximum Operating Pressure : 5Mpa(50kgf/cm²)
- Operating Pressure : 3.5Mpa(35kgf/cm²)
- 4-Way Distributor
- Distributional Coupling as mounted(4ea)

24

Hydraulic Check Valve

tPC-2505

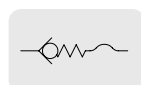


- Maximum Operating Pressure : 5Mpa(50kgf/cm²)
- Operating Pressure : 3.5Mpa(35kgf/cm²)
- Cracking Pressure : 0.5kgf/cm²

25

Hose with Check Valve

tCH-4585



- Maximum Operating Pressure : 21Mpa (210kgf/cm²)
- Operating Pressure : 7Mpa(70kgf/cm²)
- Cracking Pressure : 0.5kgf/cm²
- Operating Temperature : -40°C~125°C
- Minimum Curvature Radius : 80mm
- Length : 850mm

COMPONENTS OF HYDRAULICS TRANSPARENCY ESSENTIAL COMPONENTS

THT-7964-1

26

Flow Resistance
Measuring Hose A Type

hFR-2250



- Maximum Operating Pressure : 5Mpa(50kgf/cm²)
- Hose's Diameter : Outside $\varnothing 4$ /Inside $\varnothing 2$
- Hose's Length : 2500mm
- Round Shape Type

27

Flow Resistance
Measuring Hose B Type

hFR-2500



- Maximum Operating Pressure : 5Mpa(50kgf/cm²)
- Hose's Diameter : Outside $\varnothing 4$ /Inside $\varnothing 2$
- Hose's Length : 5000mm
- Round Shape Type

28

Flow Resistance
Measuring Hose C Type

hFR-4500



- Maximum Operating Pressure : 3Mpa(30kgf/cm²)
- Hose's Diameter : Outside $\varnothing 6$ /Inside $\varnothing 4$
- Hose's Length : 5000mm
- Round Shape Type

29

Flow Resistance
Measuring Hose D Type

hFR-4180



- Maximum Operating Pressure : 3Mpa(30kgf/cm²)
- Hose's Diameter : Outside $\varnothing 6$ /Inside $\varnothing 4$
- Hose's Length : 1500mm
- Rectangular Block Type