

# NETWORK TRAINING SYSTEM SERIES

**New**  
**ED-NET4-x**

- Step by step courses on the networks theories to train the engineers
- CISCO Router based training will help obtain CCNA, CCNP, CCIE certificates
- Functions and characteristics of network system(LAN Card, Router, L2 Switching Hub, L3 Switching Hub)
- 19" Rack type structure for effective network configuration
- Optimized learning system for the Router based on one on one training(OPTION)

PART3  
IT /  
COMMUNICATION



Total of four steps to train the engineer to the advanced level through in-depth theories and systematic experiments on the Network System

- **Step - 1**
  - » Network Cabling : UTP Cable, fiber optic cable and phone cable
- **Step - 2**
  - » Network System Setting : Routing, switching, switch/router and wireless LAN technologies
- **Step - 3**
  - » Network Protocol Analysis : traffic, data structure capture and error packet
- **Step - 4**
  - » Network Security : Firewall, VPN, IDS

## > SPECIFICATIONS

	Model	ED-NET4-A	ED-NET4-B	ED-NET4-C
General	Rated Voltage	AC 220V, 50/60Hz		
	Dimension (WxHxD)mm	700 x 1600 x 750	700 x 1900 x 750	700 x 2100 x 750
	Material	Aluminum(4 doors)		
Basic Experiment	Channel Service Unit	T1/E1, RMON / VLAN / IP Multicasting / SNMP 10/100 LAN 1Port, WAN 1Port		
	Router	Motorola MPC860T Power QUICC(50MHz) Processor, Flash Memory 16MB, DRAM 32MB, Cisco ISO Software		
	L2 Switching Hub	10/100Mbps LAN 24Port, Optical Giga 1Port, Switching Capacity 12Gbps ARM7 Processor, Flash Memory 4MB, DRAM 24MB, Packet Processing Speed 6.6Mbps, VAN 32ea		
LAN Cable System	Patch Panel Outlet	Category5 RJ-45 Type, 24Port(Front RJ-45, Back-110 Block)		
		Category5 RJ-45 Type, 24Port(Front RJ-45, Back-110 Block)		
Optical Cable System	Optical Distribution Unit	ST Type(4ea), SC Type(4ea), SC to SC 2Core Patch Code(1ea), SC to St 2Core Patch Code(1ea)		

# NETWORK TRAINING SYSTEM SERIES

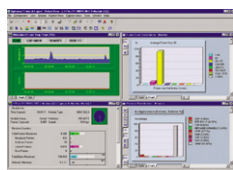
# ED-NET4-X

	Model	ED-NET4-A	ED-NET4-B	ED-NET4-C
Phone Cable System	Main Telephone Box	110 Block Type(100P)		
	Medium Telephone Box	110 Block Type(50P)		
	Home Distribution Telephone Box	110 Block Type(30P)		
	Home Distribution Terminal	Outlet type 2Port(1Port data, 1Port for telephone)		
Tool Kit Box		RJ-45 Tool, 110 Punching Tool, LAN Tester(Link Runner), UTP Patch 5M ASS'Y 3ea		
Protocol Analysis		60-user license (per institute), 7-layer analysis, CISCO ISL 802.10 VLAN analysis		
		Expert function per layer		
		Alarm, Trigger, Spanning Tree, Error Statistics, Auto Save functions		
Wireless LAN System		-	IEEE802, 11b, 11Mbps 40/128 Bit WEP Security Wireless LAN Card(11Mbps) : 5ea	
Switch/Router(L3 Switching Hub)		-	Layer 3 switching function	
			10/100Mbps LAN 24Port, Fiber Optic Giga 2 Port expansion	
			Switching Capacity : 13Gbps, Packet Processing Speed : 6.6Mbps	
			VLAN 256ea, Mac Address 8,192ea	
Network Security Solution Training	Firewall	-	-	Hardware and software in one as consolidated (19" Rack, 1U)
				Packet Size : 50MB SD
				Concurrent Session : Over 200,000
				Processing per second : Over 18,000 sessions
				Double Bridge and Router modes
				Bandwidth Management per HA, LB and service
				Can interact with IDS
	Hardware and software in one as consolidated (19" Rack, 1U)			
VPN	-	-	Remote Access, xDSL, Cable Modem, LAN IPSec, Split, NAT, DES, 3-DES, HMAC-MD5, HMAC-SHA1 External CA function, IKE Protocol, GUI/WEB	

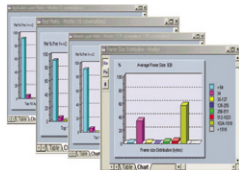
# NETWORK TRAINING SYSTEM SERIES

# ED-NET4-x

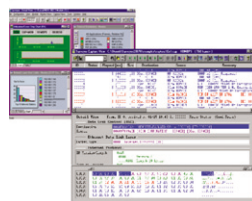
	Model	ED-NET4-A	ED-NET4-B	ED-NET4-C
Network Security Solution Training	IDS	-	-	100Mbps 2Port
				Hardware and software In one as consolidated (19" Rack, 1U)
				OS : Linux 7.1 or above
				TCP : 65,535ea UDP : 65,535ea
				Real-time monitoring for the network traffic Detection and analysis of abnormal traffics



Network Monitoring



Transition of Traffic Per Layer



Capture &amp; Decoding of Packet

Curriculum	Model	ED-NET4-A	ED-NET4-B	ED-NET4-C
Basic Experiment	Channel Service Unit	0	0	0
	Router			
	L2 Switching Hub			
LAN Cable	Patch Panel	0	0	0
	Outlet			
Fiber Optic Cable System	Fiber Optic Distribution Box	0	0	0
Phone Cable System	Main Telephone Box	0	0	0
	Medium Telephone Box			
	Home Distribution Telephone Box			
	Home Distribution Terminal			
Tool Kit Box	UTP RJ-45 Tool	0	0	0
	110 Punching Tool			
	Tester(LinkRunner)			

Curriculum	Model	ED-NET4-A	ED-NET4-B	ED-NET4-C
Protocol Analysis	OptiView Protocol Expert	0	0	0
Wireless LAN System	Access Point	-	0	0
	Wireless LAN Card			
Switching /Router	L3 Switching Hub	-	0	0
Network Security Solution	Firewall(SecuiWALL)	-	-	0
	VPN(SecuiVPN)			
	IDS(Sniper)			
OPTION				
Category	Model	Description		
Modular Router	ED-NET4-001	1Chassis 3Router~5Router		
		1Router 3Ethernet Port		
		CISCO IOS S/W command RAM 64MB, CFC 32MB		
LAN Tester	ED-NET4-002	LinkRunner-kit/Network Multi-meter/IP ping test		
Portable LAN Analyzer	ED-NET4-003	NetTool/Traffic verification, IP ping test, storage and report on the traffic data		
Integrated Network Analyzer	ED-NET4-004	Hardware and software in one as consolidated, OptiView WorkGroup Analyzer		