

## • USN / RFID System

# PC BASED RFID TRAINER

New  
ED-1450



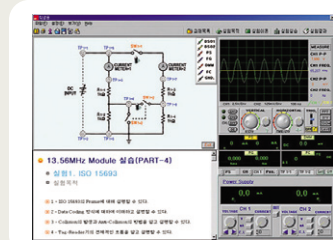
## > FEATURE

- The PC based RFID Trainer ED-1450 is a complete training system of total 2 Experimental Modules for RFID basic principles and application experiments.
- Basically, ED-1450 model is designed for use by connecting to DS-1410 Docking Station(Optional). PC connection through the Docking Station enables contact control on MMI(HMI) based software. It is also used together with CBIS-1400(Optional) for real-time measurements on the computer screen.
- The electronic manual operable on PC comes with ED-1450 and e-learning is optimized by remote control of student's operating program and evaluation of student's online report in real time.
- Through DS-1410, it provides Variable Power Supply(VPS), Function Generator(FG), Analog Output, Digital Output needed for experiments.
- ISO/IEC 14443/15693/1800-3
- Operating Range : 125kHz(within 70mm), 13.56MHz(within 70mm)
- Anti Collision function
- Tag : 125kHz(Read Only Tag), 13.56MHz(Read / Write Tag)

## > CONFIGURATION

- ED-1450 : PC Based RFID Trainer
  - » Number of Modules : 2ea
  - » Module Dimension : 290(W) x 210(H) x 26(D)mm
- Required System
  - » DS-1410 : Docking Station(Optional)
    - › Please refer to page 24 on DS-1410 specifications
  - » CBIS-1400 : Computer Based Instrument System(Optional)
    - › Please refer to page 22 on CBIS-1400 specifications
  - » Computer(Optional)

## Operating Software

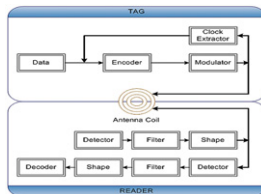


## Experiments Module



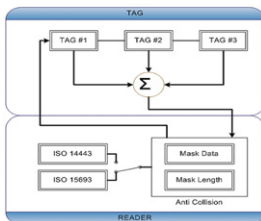
### M-51 RFID 125kHz Module

- Reader Frequency : 125kHz
- CPU : AVR(ATMega128), FPGA(EPM7064S)
- Line Coding : NRZ, RZ, Manchester, Biphasic
- Modulation : ASK (Amplitude Shift Keying)
- RS232 Serial Interface : PC communication
- Dip Switch : 16bits data
- Fixable Numeric Display(FND) : 8 bits Mode Display
- Liquid Crystal Display(LCD) : Data Frame Display



### M-52 RFID 13.56MHz Module

- Reader Frequency : 13.56MHz
- CPU : AVR(ATMega128, Mega16), RFIC(TRH031M)
- Line Coding : ISO 14443A(Manchester Coding)/ISO 15693(Manchester Coding)
- Modulation : ASK(Amplitude Shift Keying)
- RS232 Serial Interface : PC communication
- Dip Switch : Tag Data, Mask Data, Mask Length
- Fixable Numeric Display(FND) : 2ea
- Liquid Crystal Display(LCD) : Data Frame Display, Tactile Switch



#### OS ENVIRONMENT

- Pentium IV above 1.7GHz, RAM 512M or higher
- Hard Disk Min. 500Mbyte free space
- USB 2.0 Compatible
- Windows NT4.0/2000/XP  
(Recommended OS : Windows XP)

#### ACCESSORIES

- 125kHz TAG : 5ea
- 13.56MHz TAG : 5ea
- Connection Cord : 1set
- RS232 Cable : 1ea
- Program CD : 1set
- User's Manual : 1ea
- AC Power Cord : 1ea