

# AE4000 Series OTDR Module

## Key Benefits

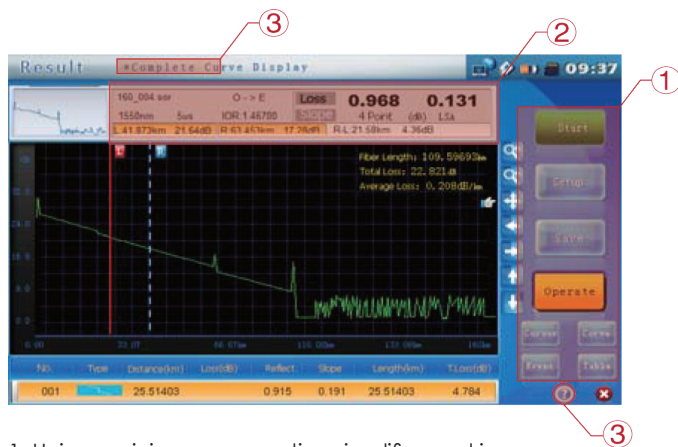
- Flexible FC-1 modular platform enables OTDR module to be combined with other test modules to expand test applications without investing in additional platforms.
- Can accurately detect jumper cable ends, with 0.8m minimum dead zone
- Intuitive graphical interface shortens learning curve
- One button auto test simplifies setup to quickly detect faults
- User friendly touch screen operation
- Fast storage function and one touch operation for saving results
- Unique mini menu allows quick and convenient results analysis



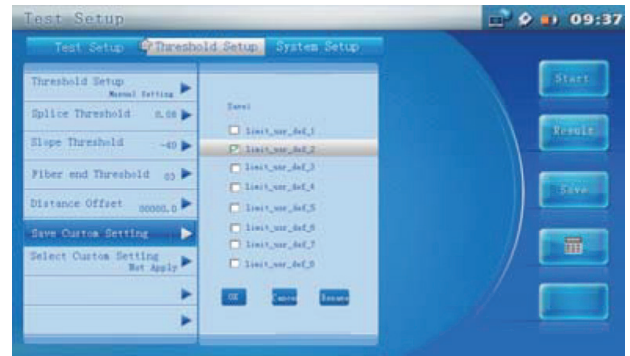
The AE4000 Series OTDR Modules are the latest additions to the FC-1 family, Deviser's advanced modular platform. As host to a wide range of test and measurement tools, the FC-1 supports Ethernet and Transport modules as well as OTDR, making it the only instrument needed to test emerging or next-gen networks - all the way from the physical to the service layer.

Choose from a selection of OTDR modules, covering a variety of dynamic ranges, satisfying any testing need from PON to long-haul networks. Extended battery life allows the user to test for up to 8 hours on a single charge, and the FC-1's durable, flexible, and adaptable design make it the ideal solution for field operations.

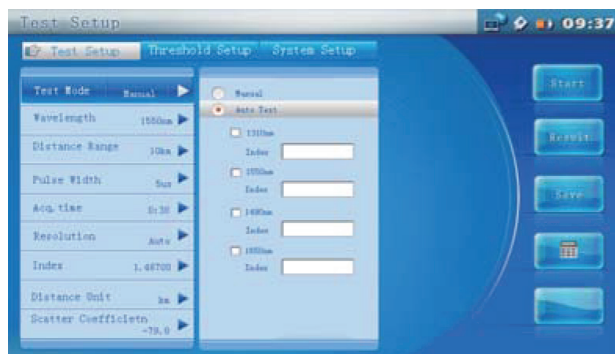
Model	Wavelength	Dynamic Range(dB)	Event Dead Zone (m)	Attenuation DZ (m)
AE4000A	1310/1550	37/35	0.8	5
AE4000B	1310/1550	40/38	0.8	4.5
AE4000C	1310/1550	43/41	0.8	4.5



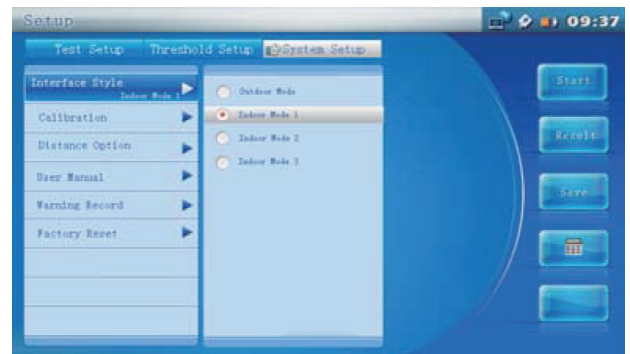
1. Unique mini menu operation simplifies and increases test efficiency
2. Simple setup with intuitive test result display
3. Easily accessible help function



Create and assign unique measurement profiles for each test environment.



Intelligent auto-mode sets up measurement parameters, conducts tests, and stores data.



Test in a variety of indoor and outdoor lighting conditions with four distinct color styles.

- Live fiber detection protects the optical adapter
- Optical connector detection notifies users of missing connectors
- Self-calibration of OTDR

Specification	
Measurement Time	Customized
Distance Accuracy	±(0.75m +0.0005 % Distance +Sampling Resolution)
Attenuation Accuracy	±0.002dB
Loss Threshold	0.01dB
Loss Resolution	0.001dB
Distance Resolution	0.05m-12.8m
Linearity	0.03dB/dB
Sampling Points	256000
Data Storage	>10000
Optical Adapter	FC/PC, SC/PC
Battery	Lithium Rechargeable Battery, Input < 4hours, Output > 10hours
Operating Temperature	-10°C ~ 50°C
Storage Temperature	-40°C ~ 70°C
Relative Humidity	0%-95%
Weight (Module)	2.3kg (0.35kg)
Accessories	
SC/PC Adapter	1
Package Bag	1
Test Report	1
Quick Operation Manual	1
Disc	Workbench PC Management Software and Operation Manual

## Ordering Information

SKU No.	Description
FC-1	Modular Handheld Platform. 7", 800x600 LCD Touchscreen, 8GB SD Memory, 2 x USB 2.0, 10/100/1000Base-T RJ-45, SD Slot, 7.4V / 2.4Ah Li-Ion Battery >8 Hours Operation, Linux OS, AC/DC Adapter, Carrying Case, Stylus, 10.1" x 7.2" x 2.9" (256mm x 183mm x 74mm), 2.86 lbs (1.3kg).
AE4000A	OTDR Module. <b>1310/1550nm, 37/35dB, 0.8m/&lt;5m</b> , FC (Included), SC, LC or ST, PC (included) or APC, AC/DC Adapter, Cleaning Swab, Calibration and Quality Certificates, Quick Reference Guide, CD with Instruction Manual and PC Management Software.
AE4000B	OTDR Module. <b>1310/1550nm, 40/38dB, 0.8m/&lt;4.5m</b> , FC (Included), SC, LC or ST, PC (included) or APC, AC/DC Adapter, Cleaning Swab, Calibration and Quality Certificates, Quick Reference Guide, CD with Instruction Manual and PC Management Software.
AE4100A	OTDR Module. <b>1310/1550/1625nm, 37/35/35dB, 0.8m/&lt;4.5m</b> , FC (Included), SC, LC or ST, PC (included) or APC, AC/DC Adapter, Cleaning Swab, Calibration and Quality Certificates, Quick Reference Guide, CD with Instruction Manual and PC Management Software.
AE4100B	OTDR Module. <b>1310/1550/1650nm, 37/35/35dB, 0.8m/&lt;4.5m</b> , FC (Included), SC, LC or ST, PC (included) or APC, AC/DC Adapter, Cleaning Swab, Calibration and Quality Certificates, Quick Reference Guide, CD with Instruction Manual and PC Management Software.
AE4100C	OTDR Module. <b>1310/1550/1490nm, 37/35/35dB, 0.8m/&lt;4.5m</b> , FC (Included), SC, LC or ST, PC (included) or APC, AC/DC Adapter, Cleaning Swab, Calibration and Quality Certificates, Quick Reference Guide, CD with Instruction Manual and PC Management Software.
6250.0900.11	DI-1000 Lightel Optical Fiber Scope & FiberPath™ Inspection Software
AE4000-700	Optical Power Meter
AE4000-710	Light Source Module
AE4000-720	Visual Fault Locator, 650nm, 1mW
AE4000-801	FiberPath™ Link Mapper
AE4000-802	FiberTune Multi-Scan
AE4000-750	FC Connector
AE4000-751	LC Connector
AE4000-752	ST Connector
AE4000-753	SC Connector
FC-FC-S0.9-L2	Physical Connector (PC) Type (Included)
FC/APC	Angle Physical Connector (APC) Type
AE4000-737P	Fiber Cleaning Pen
FSP060-DBAE1	AC/DC Adapter
AE4000-733	2-Prong Power Cord plus Ground (Europe except UK)
AE4000-734	3-Prong Power Cord plus Ground (US)
AE4000-735	3-Prong Power Cord plus Ground (Australia)
AE4000-736	3-Prong Power Cord plus Ground (UK)
AE4000-737	Optical Fiber Cleaner Kit
AE4000-001	English Instruction Manual (hard copy)
SDHC-C4-8G	SD Card (8GB)
AE4000-002	Carrying Case
AE4000-730	Stylus
AE4000-731	Cleaning Swab
AE4000-003	Quick Reference Guide

©2016 Deviser Instruments Incorporated, 780 Montague Expressway, Suite 701, San Jose, CA 95131. All rights reserved. Specifications subject to change without notice. All product and company names are trademarks of their respective corporations. Deviser Instruments manufacturing facilities are ISO 9001 certified. Do not reproduce, redistribute, or repost without written permission from Deviser Instruments. AE4000 160916