

AE3000 Series OTDR

Integrated Solution for Fiber Network Measurement

AE3000 is a portable OTDR with new appearance and design methodology. It is more compact and convenient compared with the traditional OTDR and it has better performance and accuracy than the handheld OTDR. AE3000 can fully meet your testing requirements and will be your great assistant no matter where you install or maintain your fiber network.

Key Features

- Point-to-point and point-to-multi-point data share via internet. Users can remotely control this instrument via PC when conducting fiber maintenance and testing.
- 6.4" color TFT LCD display for improved viewing.
- Friendly operation interface and convenient one-button testing.
- High-speed signal processing, less measurement time, and faster result analysis.
- Ideal for the field: compact and lightweight, shock proof, water proof, resistant to dust and common chemicals.
- Large internal memory (up to 1000 test results).
- Lithium battery included with more than 10 hours operation time.
- Based on Linux operating system and unlimited upgrade.

Flexible Connectivity with Multiple Interfaces

- RJ-45: remote control via PC and data-share.
- USB port: easy data transfer to U-disk and PC.
- SD card slot: support maximum 1G SD card.
- Large internal memory: up to 1,000 test results.
- Fiber Adapter: detachable for easy cleaning.



Concise and Intuitive Display

Testing results, including the curves and event lists, are displayed on the same screen which is clear at a glance. AE3000 can determine the location of every event and mark on the curve automatically as well as indicate the attenuation between any two points on the fiber. Further, event information is listed on the same screen with the curve and such information includes NUMBER, TYPE, DISTANCE, LOSS, REFLECTION, TILT (ATTENUATION) and TOTAL LOSS.



Simple and Fast Parameter Setup

Fully featured testing parameters are provided with online help and are organized with user friendly windows style interface, suitable for all types of users.



Auto Diagnose and Debug Function

- Incident light auto detection and self-protection function

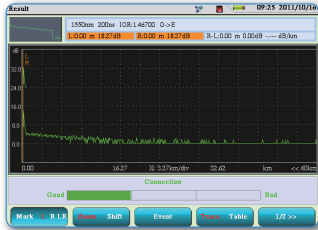
AE3000 will send alarm automatically when incident light is detected on optical connector.



AE3000 Series OTDR

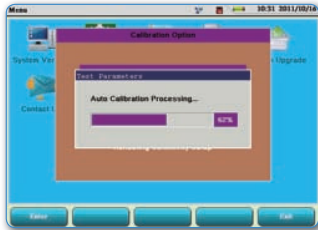
- Self-detect connection problem

Automatically detect connection problem to ensure testing accuracy



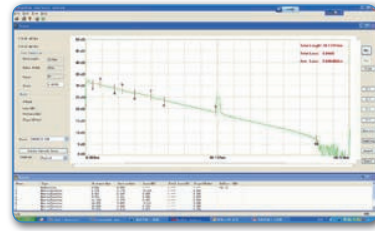
- Self-calibration function

The self-calibration function can automatically fix testing deviation problem.



- High efficiency and flexible workbench PC emulator software

Workbench PC emulator software is designed for off-line analysis of field-acquired data. The flexible configuration of the software makes it easy to generate complete professional OTDR report. It has unique remote network data control function and can easily gather internal data from the remote equipment.



AE3000 Workbench PC Interface



AE3000 and PC Connecting

Specifications

- Model

Type	Wavelength (nm)	Dynamic Range (dB)	Event Dead Zone (m)	ATT Dead Zone (m)
AE3000L	1310±20/1550±20	33/31	4	<20
AE3000	1310±20/1550±20	35/33	3	<17
AE3000H	1310±20/1550±20	37/35	1.5	<10
AE3000S	1310±20/1550±20	40/38	1	8
AE3000P	1310±20/1550±20/1625±20	38/37/37	0.8	6-7

- Specifications

Distance(km)	5 m ~ 200 km
Pulse Width (ns)	5 ns ~ 20 μs
Measurement Time	User-defined
Distance Uncertainty(m)	±0.5 m ±0.001% × testing distance
Linearity(dB)	±0.01
Loss Threshold (dB)	0.01
Loss Resolution (dB)	0.001
Distance Resolution (m)	0.1
Sampling Points	64000
Data Storage	1000 traces (AE3000L/AE3000) 2000 traces (AE3000H/S/P)

- Others

Display	6.4" color TFT LCD
Fiber Adapter	FC/PC, SC/PC
Interface	USB(Principal and subordinate each) /SD/RJ45
Battery	Rechargeable Lithium battery inside(charging <4 hours, Operation time>10 hours)
Power Supply	AC/DC adapter(Input:AC90-240 V±10% Output:18 V)
Operating Temperature	-10 °C ~ 40 °C
Storage Temperature	-40 °C ~ 70 °C
Comparative Humidity	<80%
Weight	<2.5 kg (5.4 LB)
Dimension (L*H*W)	248 mm x 201 mm x 75 mm