

FEATURES:

- Low power dissipation
- Compact and lightweight
- RoHS compliant and CE marked for compliance with the low voltage directive



N258X Series Power Filters

THE N2580 AND N2581 are RFI/EMI high current power filters for use on main incoming three phase and neutral supplies.

DESCRIPTION

The N2580 carries up to 800 Amps and the N2581 carries up to 400 Amps. Both are ideal for use in EMPP systems and other applications.

Detachable end housings are supplied with the unit, giving the user maximum cabling flexibility. These filters are also available with output terminations through the base.

The load current must return through the filter to ensure that the maximum performance is maintained. These filters can be installed in parallel. Current capabilities of 2400 Amps or more can be achieved maintaining the attenuation given by a single filter.

Solid and permanent earthing of the case of these filters is essential for safety reasons and to ensure

optimum performance. All filters in this range are orientation sensitive and must be installed the correct way round (electrically).

FEATURES

The filters are extremely compact and lightweight for their current carrying capability and offer a very low power dissipation and temperature rise.

APPLICATIONS

- Filtering of industrial plants and computer facilities
- Filtering of mains incomers entering screened room facilities

STANDARD CONFIGURATION

- Supplied with end housings
- Dedicated neutral

OPTIONS

- TS (transient suppressor)
- HVTS (high voltage transient suppressor)

- Other options available upon request

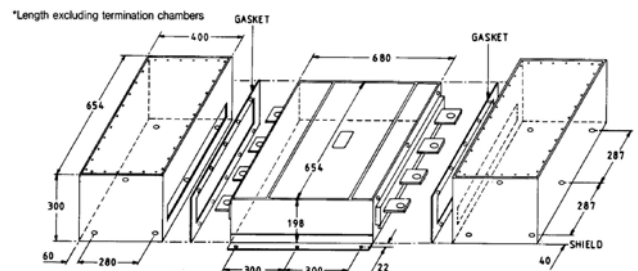
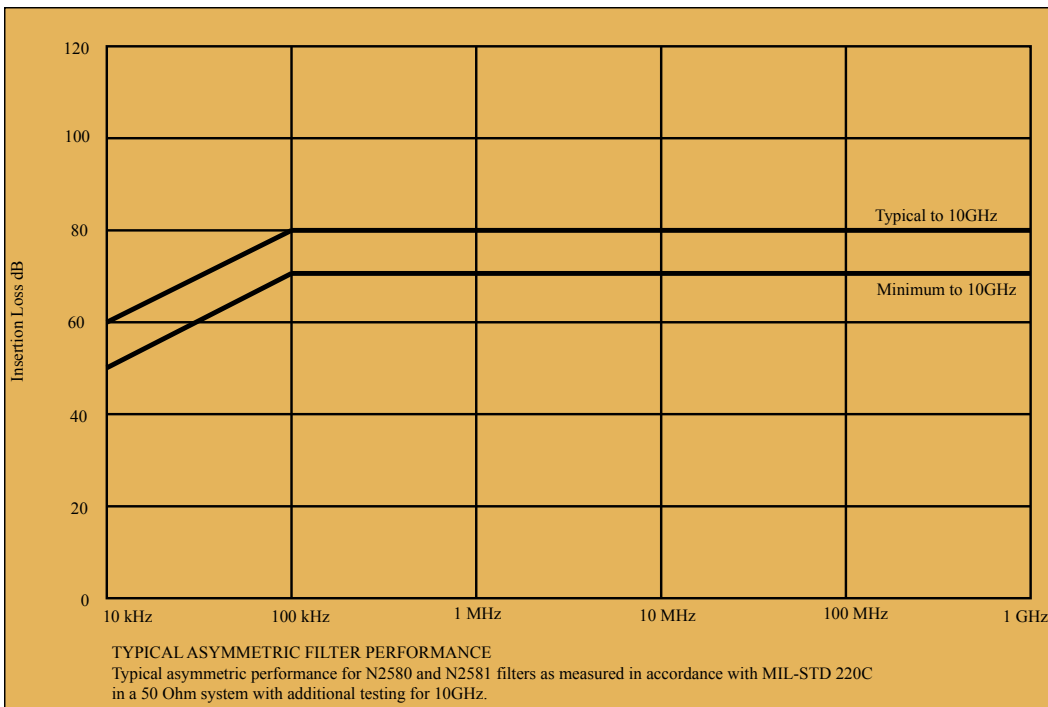
Electrical Specifications

PART #	CURRENT MAX	FREQUENCY	VOLTAGE MAX	# OF LINES	VOLTAGE DROP ON FULL LOAD IN A 250V 50/60Hz SYSTEM PER LINE	DC RESISTANCE PER LINE	TOTAL SHUNT CAPACITANCE PER LINE	CASE TEMP RISE ON FULL LOAD	OPERATING CASE TEMP ON FULL LOAD	FULL LOAD HEAT DISSIPATION
N2580	800 amps	50/60 Hz	440/250 V	4	120 mV	0.15 ohms	34 uF	15 deg. Celsius	-20 to +70 deg. Celsius	300 W
N2581	400 amps	50/60 Hz	440/250 V	4	160 mV	0.4 ohms	17 uF	15 deg. Celsius	-20 to +70 deg. Celsius	200 W

Physical Specifications

PART #	LENGTH (mm)	WIDTH (mm)	HEIGHT (mm)	WEIGHT (kg)
N2580	680*	654	198	72
N2581	680*	654	198	68
Termination Chambers	400	654	300	28

*Length excluding termination chambers



Phone +1.512.531.6400 • info@ets-lindgren.com • www.ets-lindgren.com
Offices in the US, Finland, UK, France, Singapore, India, Japan, China, Taiwan