

R&S® ETL TV Analyzer

The universal reference receiver for broadcast signal analysis

The R&S® ETL TV analyzer has been successful on the market for years. For many network operators and manufacturers, it is the ultimate reference measurement tool. An upgraded model is now available.

New model
with HEVC support



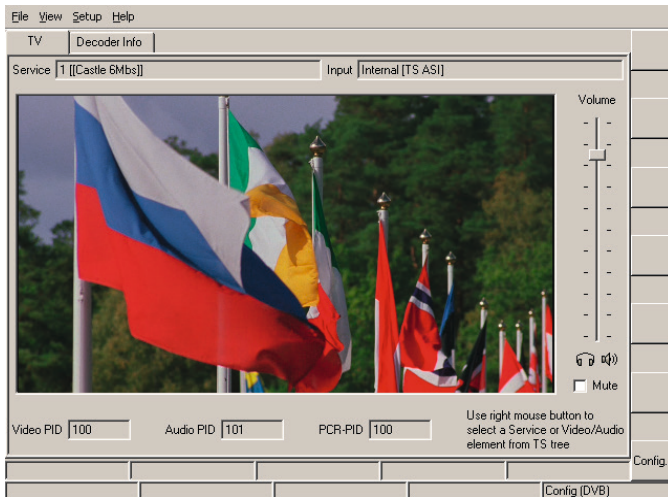
A/V decoding and TS processing updates

- Decoding and display of HEVC and AVS/AVS+ coded video signals
- Support of UHD video resolution
- TS over IP interface (decode, analyze, generate and stream received TS)¹⁾

¹⁾ Enabled by software option planned for end of 2017.

Base unit updates

- New display with improved readability
- SSD with 256 Gbyte
- Faster USB interface
- New operating system
- New front plate design

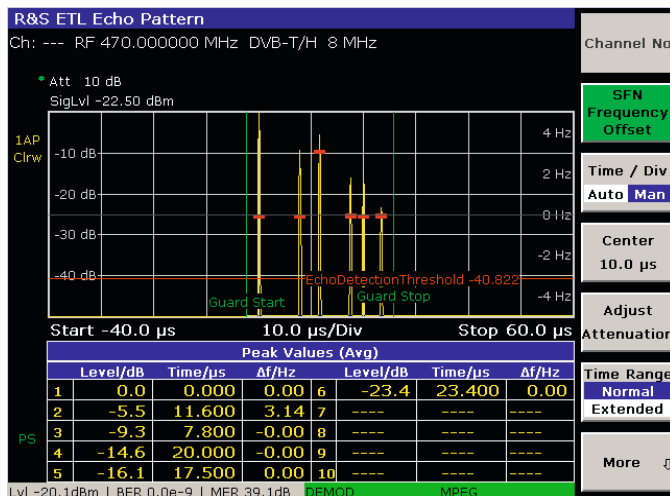


Hardware-based video decoding (MPEG-2/H.264 (MPEG-4)/HEVC/AVS(+)) with video output on integrated screen and CCVS/HDMI™ output.

The R&S®ETL combines the functionality of a TV (analog and digital) and FM (radio) signal analyzer, a video and MPEG TS analyzer and a spectrum analyzer in a single instrument. The R&S®ETL also contains generators to create analog video signals, audio signals and MPEG-2 transport streams.

Key facts

- Realtime demodulation for analog TV, DVB-T, DVB-T2, DVB-H, ATSC/8VSB, ATSC Mobile DTV, ISDB-T(B), DTMB, T-DMB/DAB, FM (radio), J.83/A/C, DVB-C, J.83/B
- Advanced frontend and FPGA-based demodulation
- Fast and accurate measurements of transmission impairments (e.g. level, MER(f), BER, echo pattern, amplitude and phase response)
- Frequency range from 500 kHz to 3 GHz
- Preselection with additional 75 Ω RF input
- Video display and output for MPEG-2, H.264 (MPEG-4), HEVC and AVS/AVS+ coded video signals



Echo pattern with SFN frequency offset measurement (red lines).

Ordering information

Designation	Type	Order No.
TV Analyzer, 500 kHz to 3 GHz, with tracking generator	R&S®ETL	2112.0004.13
AV Decoder and TS Processing	R&S®ETL-B380	2118.4030.02
UHD Extension	R&S®ETL-K381	2118.4253.02
IP Input and Output ¹⁾	R&S®ETL-K386	2118.4260.02

¹⁾ Enabled by software option planned for end of 2017.

The terms HDMI and HDMI High-Definition Multimedia Interface, and the HDMI Logo are trademarks or registered trademarks of HDMI Licensing LLC in the United States and other countries.

Rohde & Schwarz GmbH & Co. KG

Europe, Africa, Middle East | +49 89 4129 12345
 customersupport@rohde-schwarz.com
 North America | 1 888 TEST RSA (1 888 837 87 72)
 customer.support@rsa.rohde-schwarz.com
 Latin America | +1 410 910 79 88 | customersupport.la@rohde-schwarz.com
 Asia Pacific | +65 65 13 04 88 | customersupport.asia@rohde-schwarz.com
 China | +86 800 810 82 28 | +86 400 650 58 96
 customersupport.china@rohde-schwarz.com
 www.rohde-schwarz.com

R&S® is a registered trademark of Rohde & Schwarz GmbH & Co. KG
 Trade names are trademarks of the owners
 PD 3607.5948.32 | Version 02.00 | May 2017 (sk)
 R&S®ETL TV Analyzer
 Data without tolerance limits is not binding | Subject to change
 © 2016 - 2017 Rohde & Schwarz GmbH & Co. KG | 81671 Munich, Germany



3607594832